



CENTERSTONE'S

# ANNUAL REPORT

FISCAL YEAR 2025



CENTERSTONE



# Table of Contents

Letter From Our CEO.....4

Highlights & Accomplishments.....6

Financial Growth.....7

Impact Report: Florida.....8

Impact Report: Illinois.....10

Impact Report: Indiana.....12

Impact Report: Tennessee.....14

Impact Report: Centerstone's Foundation.....16

Impact Report: Centerstone's Institute.....18

Impact Report: Military Services.....20

Board Members.....22

Donors.....23

Growing Our Future.....38



# Letter From Our CEO

## David C. Guth, Jr.

**Dear Friends,**

Each year, I'm honored to reflect on the incredible work Centerstone accomplished in the communities

we serve. At the heart of everything we do is a deep belief in the power of people coming together—with compassion, commitment, and a shared purpose—to support those in need.

This year has been a profound reminder of how vital that community truly is. The behavioral health field stands at a pivotal moment: we are seeing more widespread understanding and support than ever before. Stigma is decreasing. Demand for services is rising. And through initiatives like our Certified Community Behavioral Health Clinics we have extended our reach to care for more communities and patients.

I'm deeply grateful to our dedicated team members who have worked tirelessly to meet record levels of need. Their resilience and teamwork have made it possible to care for patients and support one another through an especially demanding time.

Advancements in the science of care are helping us serve our communities with greater precision and confidence. Through Centerstone's Institute for Clinical Excellence and Innovation, we have developed simulation-based training and AI-powered tools to better equip our clinical teams. These efforts are strengthening the quality of care and reinforcing our commitment to evidence-based practices that truly make a difference in people's lives.

Through Centerstone's Patient Safety Organization, we are engaging with a national network of peers, exchanging knowledge, and sharing best practices. It's a powerful expression of what we can accomplish when we prioritize safety and

quality as part of a larger community determined to raise the standard of care.

Our national policy team continues to be a trusted voice in Washington, D.C., helping to shape the future of mental health and substance use care in communities across the country. As policymakers look for solutions, they are increasingly turning to Centerstone—not only for our expertise, but because of the integrity and compassion we bring to this work.

As we look ahead, we do so with the full strength of our community behind us—patients, families, staff, donors, and partners—each playing a vital role in moving us forward. We have ambitious goals for the year ahead, and with your support, we will continue to lead and innovate. Most importantly, together, we are building a future where every person has access to life-changing, life-saving care.

A stylized, handwritten signature in a dark teal color, consisting of a large 'D' and a smaller 'G'.

**David C. Guth, Jr.**  
Chief Executive Officer



# Highlights & Accomplishments

**Received a \$995,000 grant from the Substance Abuse and Mental Health Services Administration (SAMHSA)** to serve adults and adolescents who are experiencing mental health concerns and substance use disorders.

**Approved by the General Medical Education Committee to increase the size of Centerstone's Psychiatric Residency program** from 16 to 24 residents, increasing our ability to train the next generation of community-based psychiatric providers.

**Centerstone's Foundation secured \$5,154,536** in new revenue in fiscal year 2025 to support patient care.

**Trained 150 law enforcement officers** in Florida through Centerstone's Crisis Intervention Training (CIT) program, helping them be better resourced when managing mental health crises in the community.

**Opened Certified Community Behavioral Health Clinic (CCBHC) demonstration sites** serving Alton, Illinois and a 15-county service area in Indiana, ensuring access to coordinated comprehensive behavioral health care for people in underserved communities.

**Hosted more than 1,000 participants at Centerstone's Annual LifeStory 5K/10K Walk and Run events** in Florida and Illinois raising \$206,102 to support suicide prevention.

**Completed construction at our new Crisis Stabilization Unit and Walk-In Center** in Clarksville, Tennessee.

**Continuing to scale the use of AI-driven tools**, now available to clinicians in all Centerstone states, resulting in a 75% reduction

in documentation time for clinicians and consistently high satisfaction ratings from clinical staff.

**Continued simulation training on evidence-based practices**, providing more than 6,000 trainings to date and doubling the number of last year's completed trainings.

**Created four veteran navigator positions** to support operations in Indiana and Illinois CCBHC locations. These military veterans are knowledgeable about veterans' benefits, VA services, and community resources and can help veterans effectively navigate the healthcare system and information about housing, jobs, and other assistance.

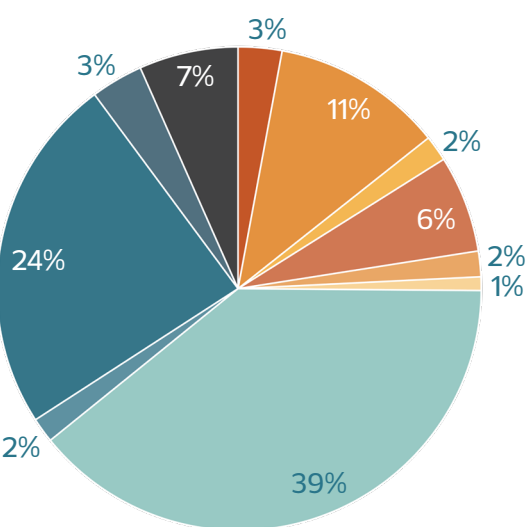
**Received \$700,000 in non-recurring funds** from the State of Tennessee to provide mental health services for veterans and military families throughout the state.

**Centerstone's Therapeutic Foster Care Program** served 287 children, with 107 new admissions, 23 adoptions, and 49 reunifications.

**Opened eight new Supported Housing facilities** in Tennessee bringing the total to more than 50 residential facilities in our network that provided a record high 111,486 services to 517 people last year.

**Grew our partnership with Cohen Veterans Network** to begin managing operations at the Hinesville, Georgia clinic which serves active duty military personnel, veterans, and their families.

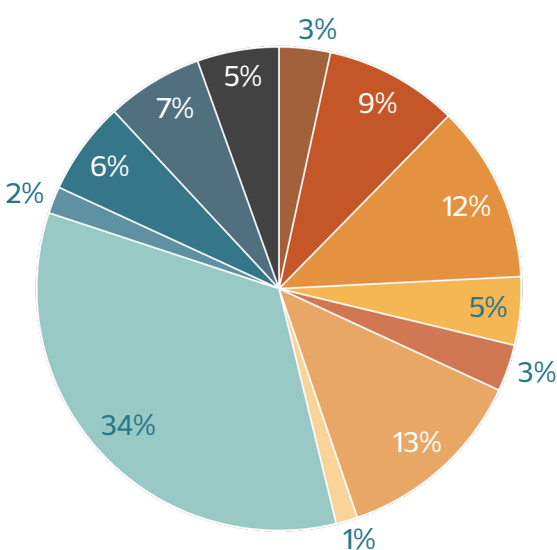
# Financial Growth



## By Payer Type

- Commercial Insurance: \$12,001,363
- Federal Agencies: \$48,538,391
- Other Grants: \$7,456,491
- Pharmacy: \$27,097,872
- Subcontracted Services: \$7,173,241
- Contributions: \$3,836,976
- Medicaid: \$165,248,454
- Medicare: \$6,917,858
- State Agencies: \$101,739,123
- County & Local Agencies: \$14,539,172
- Other: \$28,081,698

**Total: \$422,630,639**



## By Service Line

- Inpatient Care: \$14,447,062
- Residential Treatment: \$37,605,053
- Crisis Services: \$50,482,307
- Outpatient Medical Services: \$18,821,346
- Non-behavioral Physical Medicine: \$13,239,785
- Counseling Services: \$54,513,931
- Rehabilitation Services: \$5,986,334
- Community Based Services: \$143,183,168
- Child Welfare/Foster Care: \$7,850,305
- Psychosocial: \$26,187,351
- Pharmacy: \$27,385,642
- Other: \$22,928,355

**Total: \$422,630,639**

**"This year highlighted the strength of community. Despite workforce shortages and economic pressures, we continue to address financial challenges with proactive decisions that support our staff and organization, ensuring we can continue providing life-changing care. Our financial growth reflects our team's dedication and our commitment to building stronger, more connected communities."**

*Julie Spears, Vice President of Finance*

# Impact Report: Florida

**431,735**  
Services Provided

**15,154**  
Patients Served

**616**  
Staff Members

**Received Screening Brief Intervention Referral to Treatment (SBIRT) SAMHSA grant** of \$995,000 over 5 years to screen and serve adults and adolescents who are experiencing mental health concerns and substance use disorders.

**Approved by the General Medical Education Committee** to increase the size of Centerstone's Psychiatric Residency program from 16 to 24 residents, increasing our ability to train the next generation of community-based psychiatric providers.

**Received Wellness on Wheels (WOW) grant** \$650,000 over 3 years which provides mobile support for unhoused people in Manatee and Desoto counties. This program provides HIV screening, mental health counseling, and referrals to treatment pathways for vulnerable populations and families with few resources.

**Received a \$400,000 Comprehensive Treatment Court grant** from SAMHSA which will fund a diversionary program in Manatee County to provide behavioral health support services for people who might otherwise go to jail.

**Received two \$400,000 Comprehensive Treatment Court grants** from the Department of Children and Families to provide support for criminal justice, mental health, and substance use disorder in Manatee and Sarasota counties.

**Centerstone's Children's Community Action Treatment Team (CAT)** received its first grant from Impact100 SRQ. This \$109,500 grant allowed Centerstone to build a sensory room, implement new evidence-based therapies, and to increase the number of specialized trainings.

**Opened our new Samoset Resource Center** on the campus of our Behavioral Health Hospital & Addiction Center. Eight programs (FITT, FSIP, MAT, CORE, WOW, CTC, Homeless Outreach, HIV services) are now operating out of this new Manatee County location.

**Opened a new outpatient office in Arcadia,** offering mental health, addiction, and trauma services.

**Opened a new office** in Fort Meyers, our second outpatient office in Lee County. Centerstone now has five programs operating out of this new location including CCBHC, Jail Reentry, WISH, Mental Health Court, and Veteran's Court.

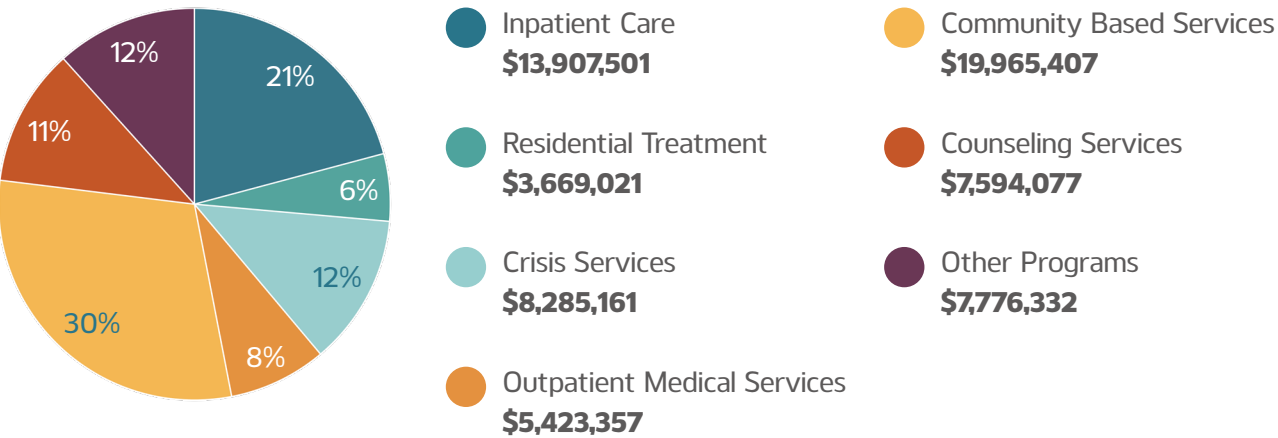
**Trained 150 law enforcement officers** through Centerstone's Crisis Intervention Training (CIT) program, helping them be better resourced when managing mental health crises in the community.

**Expanded mobile crisis services** into Sarasota County, linking people in need to the appropriate level of services.

"I am a new patient and I was impressed from the start. Everyone from the front office, to the doctor, therapist, pharmacy have been wonderful. They even have case workers who call after appointments for follow up and offer support."

*Anonymous Patient, Florida*

## \$66,620,856 Total Revenue



"This past year, we have expanded programs to deliver excellent patient care, engaged community partners, and found ways to make hard work easier for our staff. We're meeting people where they are and I am proud of the significant impact we're making for those we serve and look forward to continuing our great work!"

*Dr. Lisa Williams, Regional CEO, Florida*

# Impact Report: Illinois

**322,956**  
Services Provided

**10,285**  
Patients Served

**635**  
Staff Members

**Secured certification** and launched Certified Community Behavioral Health Clinic (CCBHC) in Alton, Illinois as part of the State of Illinois demonstration project. New CCBHC positions now support this program including two Wellness Coordinators and a Veteran’s Service Navigator.

**Partnered with Madison County Mental Health Board** and Madison County Jail to offer Medication Assisted Treatment (MAT) services at the jail, a first-of-its-kind initiative in Southern Illinois.

**Our teams supported our greater communities** by launching a free “Little Pantry” built by Alton High School Construction Workshop students to offer food and household resources for patients and neighbors in need. We also hosted blood drives and collected supplies and donations for tornado victims in Marion.

**Launched the Health Home** targeted case management service for adults experiencing serious mental illness in Franklin, Jackson, and Williamson Counties and served a total of 89 people.

**Secured a Promoting Integration of Primary and Behavioral Health Care (PIPBHC)** state grant to integrate care at Fellowship House in Anna, Illinois. The grant serves adults experiencing mental health, physical health, and addiction challenges in Union County and ensures that care considers all aspects of wellness.

**Secured state contract** for 988 Suicide and Crisis Lifeline back-up call center response for all 102 counties in Illinois.

**One of six Illinois providers** participating in the Subminimum Wage to Competitive Integrated Employment demonstration program for patients with intellectual or developmental disabilities. Currently, we have 12 clients enrolled in the program.

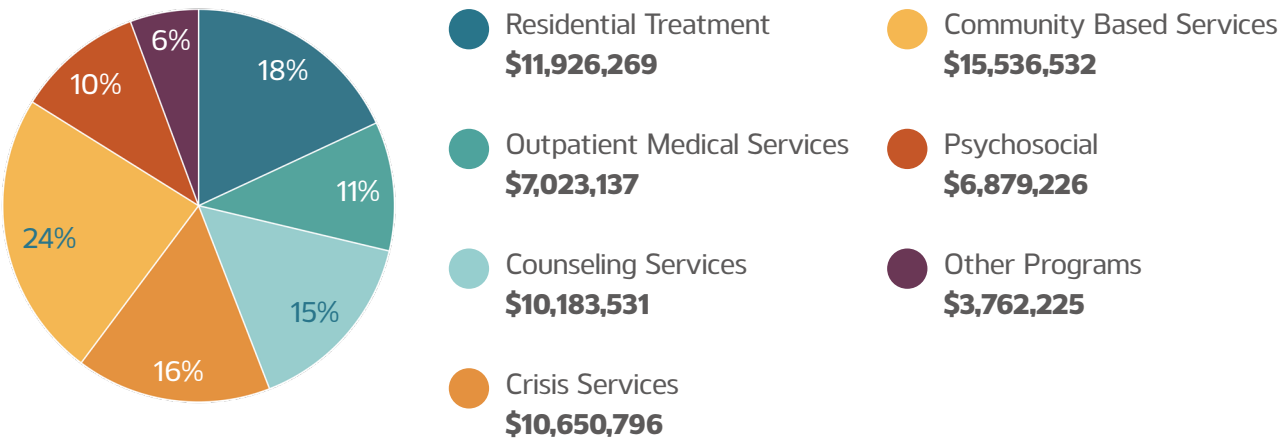
**Through a \$132,084 Mental Health Juvenile Justice grant,** we expanded our mental health juvenile justice program to provide specialized support for 20 youth under age 18 who are involved with, or at risk of involvement in, the juvenile justice system in Franklin and Perry counties.

**“I went to rehab and outpatient counseling at Fellowship House. They were a safe haven for me for two years. The counselors celebrated my victories, supported me through my defeats, and helped me to believe in myself. Fellowship House is a great place to begin your recovery journey!”**

*Anonymous Patient, Illinois*



## \$65,961,718 Total Revenue



**“The overall focus this year has been giving back to our community. From opening our CCBHC clinic and the free Little Pantry in Alton to helping tornado victims in Marion, our team has really leaned into meeting community needs. I’m proud of the work we’ve done this year to serve our patients, their families, and our communities.”**

*Anne Tyree, Regional CEO, Illinois*



# Impact Report: Indiana

**811,810**  
Services Provided

**43,747**  
Patients Served

**1,390**  
Staff Members

**Secured certification and launched Certified Community Behavioral Health Clinics (CCBHC)** as part of the State of Indiana demonstration project, receiving the highest score among all applicants.

**Served 121 children** through Centerstone's Therapeutic Foster Care Program with 64 new admissions, 14 adoptions, and 13 reunifications.

**Opened a third, new Stride Crisis Center** in Richmond that will serve as a hub for mobile crisis for people experiencing mental health or substance use disorder crises. This Center adds service to 5 additional counties bringing our total to 15 counties served by mobile crisis services.

**Centerstone's Child and Family Services** in Jeffersonville received a new \$15,000 grant from The Caesars Foundation to provide school-based life skills training for students in Floyd County, and also received a \$53,600

grant from Samtec Cares Foundation, more than double the amount from the previous year, to provide life skills for children in Clark, Floyd, Harrison, Scott, and Washington counties.

**We currently provide school-based services** in 334 schools in 26 counties. Requests for these services and additional staff continue to grow and we have responded by placing school-based therapists in additional school districts in Shelby and Hancock counties.

**Secured an \$800,000 gift** for a new location for Blair House, a supervised group living program for people experiencing serious mental illness.

**Expanded our recovery housing** to six active Centerstone Recovery Transitional (CRT) housing sites which total 53 beds and served 312 patients. Centerstone plans to add 48 additional beds in fiscal year 2026.

**"The whole treatment team of Centerstone went above and beyond in care for me and I highly recommend this place to any newcomer. There is 24/7 hands-on treatment while still providing you your own personal space while becoming healthy again. If this is the place you're in need of, please come see it."**

*Anonymous Patient, Indiana*

## \$111,083,042 Total Revenue



**"This year, launching our Certified Community Behavioral Health Clinics has been a labor of love. We have actively hired and trained staff to ensure quality care coordination and have added services to meet patient needs. To see the increased access to care through the CCBHC program and the far reaching impact it's had has been a highlight of our year."**

*Suzanne Koesel, Regional CEO, Indiana*

# Impact Report: Tennessee

**697,654**  
Services Provided

**41,347**  
Patients Served

**1,334**  
Staff Members

**Opened a new state-of-the-art outpatient facility** in Columbia, Tennessee. This new facility offers individual and family therapy, substance use treatment, as well as numerous groups and community-based programs.

**Received a \$3 million grant** from the Tennessee Department of Mental Health and Substance Abuse Services to help fund our new Tullahoma clinic, provide clinical supervision, and support renovations in our Lewisburg facility.

**Completed construction** at our new Crisis Stabilization Unit and Walk-In Center in Clarksville.

**Served 166 children** through Centerstone's Therapeutic Foster Care Program with 43 new admissions, 9 adoptions, and 36 reunifications.

**Expanded School-Based Services** into 20 new schools in the Bradley, Hamilton, and Putnam County areas while also proposing and receiving approval from the State of Tennessee for a substantial expansion of our School-Based Behavioral Health Liaison Grant.

**Received a 3-year \$750,000 Individual Placement Support Grant** through the Tennessee Department of Mental Health and Substance Abuse

Services to assist individuals who are experiencing severe, persistent mental illness with employment services in Montgomery and Robertson Counties.

**Expanded Medication Assisted Treatment (MAT)** services for opioid use disorder to 6 additional clinics, including Tullahoma, Pulaski, Lawrenceburg, Waynesboro, Madison, and Dede Wallace.

**Awarded a 5-year \$2 million Substance Abuse and Mental Health Services Administration (SAMHSA) Treatment Drug Court grant** to expand substance use disorder treatment capacity in adult drug courts in Columbia and Lawrenceburg.

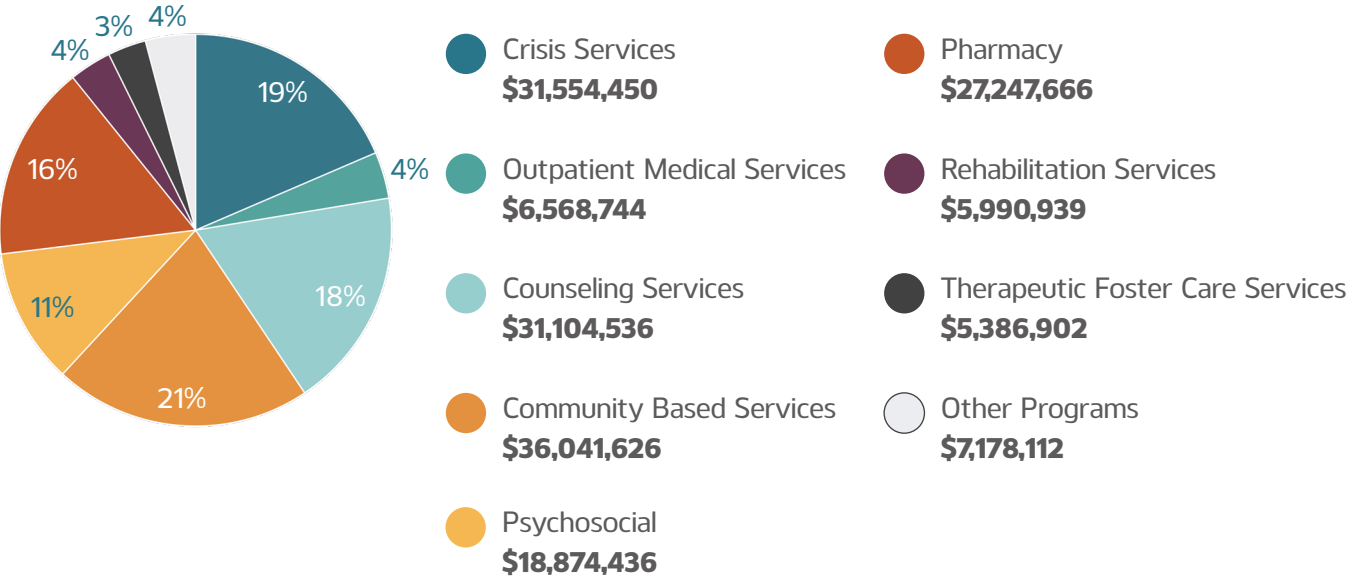
**Early Childhood Services' Project LAUNCH Grant** provided Infant and Early Childhood Mental Health training that impacted over 38,594 professionals and community members, developed partnerships with 117 organizations.

**Opened 8 new supported housing facilities** bringing the total to more than 50 residential facilities in our network that provided a record high 111,486 services to 517 people last year.

"Since starting the Regional Intervention Program (RIP), we have seen a remarkable improvement in our relationship with our daughter and it's been life changing. Perhaps the most valuable outcome from RIP has been the community we have found, other parents who are walking similar paths."

*Anonymous Patient, Tennessee*

## \$169,947,411 Total Revenue



"We remain focused on two priorities: how quickly our patients can access services and whether they are getting better. By leveraging measurement-informed care and advanced technology, we're empowering our staff to deliver the best possible outcomes."

*Ben Middleton, Regional CEO, Tennessee*



# Impact Report: Centerstone's Foundation

877  
New Donors Engaged

Engaged 877 new donors who joined Centerstone to support our mission of life-saving care.

Through their own giving, 100% of Centerstone's Boards of Directors generously provided for mental health and substance use disorder education and resources for people of all ages.

Hosted our 10th Annual Reclaiming Lives Luncheon with guest speaker Zak Williams, raising \$298,853 for suicide prevention and awareness.

Hosted Life;Story events in Illinois and Florida for suicide prevention and awareness, raising a combined amount of \$206,102 with more than 1,000 people participating!

Hosted the dedication of the Father Fred Dettwiller Reception Area at the Steven A. Cohen Military Family Clinic at Centerstone in Clarksville, Tennessee. The event recognized The Dettwiller Foundation for their generous donation to Centerstone as well as Father Fred Dettwiller's contributions to Centerstone's community of providers and patients.

Launched the new Brighter Future Fund, which provides financial assistance to employees who face financial emergencies. In the first phase, which focused on staff needs as a result of the impacts of Hurricanes Helene and Milton, 160 staff were assisted through grants of \$109,733.

### Key Partners Awarded:

**Bethany Legacy Foundation** provided a \$125,000 gift that allowed us to purchase an accessible mini-bus for patient transportation to our Madison, Indiana clinic.

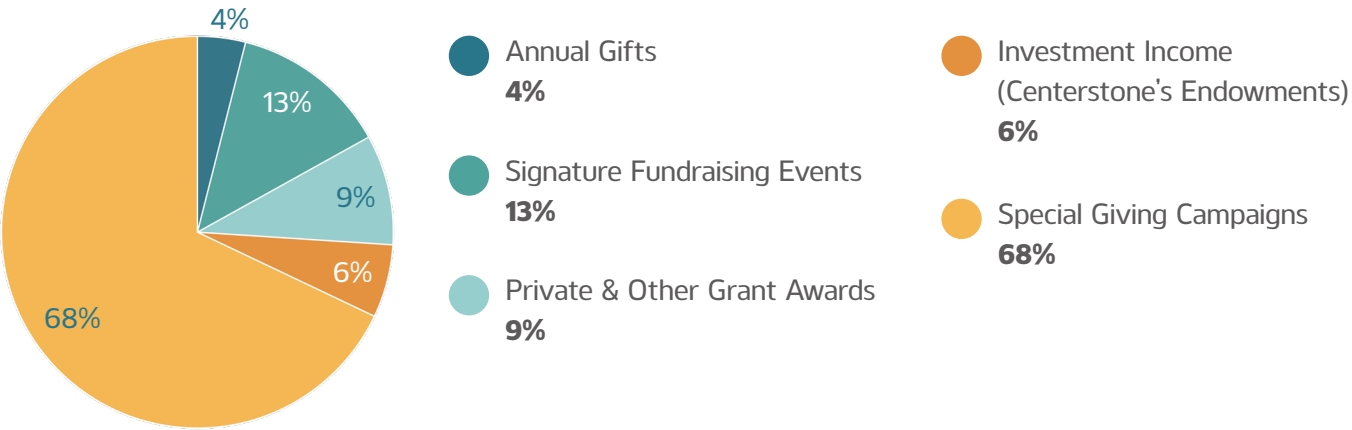
**Bob Woodruff Foundation** awarded \$150,000 for school-based and clinic-based services for 100 military children in Fayetteville, North Carolina, and clinic-based services for 50 military children in Clarksville, Tennessee

**Boeing** awarded a collective \$200,000 to provide mental health support and resources for our active-duty military service members, veterans, and their families in South Carolina and Florida.

**USAA/Face the Fight Coalition** awarded \$500,000 to support training in evidence-based practices related to services we provide through Centerstone's Military Services.

**Impact100 SRQ** awarded \$109,500 for Centerstone's Transformative Children's Wing and new evidence-based therapies to support children and families in crisis.

## \$5,154,536 Total Revenue



"This year has been an incredible example of the impact that strategic giving and community partnership can achieve. We are deeply grateful to our dedicated Board of Directors, generous donors, committed funders, passionate volunteers, and hardworking staff. Together, we look forward to building on this momentum and creating even greater opportunities for those we serve."

*Ramona Rhodes, CEO, Centerstone's Foundation*



Support behavioral health services across the country by making a gift today!



# Impact Report: Centerstone's Institute

125  
Staff Members

**Led successful re-accreditation processes** for Florida (Joint Commission), the Patient Safety Organization (AHRQ), initial CCBHC certifications for Illinois and Indiana, and completion of 6 state level audits. We were also ranked #1 of 110 organizations on the Illinois Health Practice Alliance's Award for Performance on Clinical Outreach Measures.

**Received a \$2.32 million grant** from the Health Resources and Services Administration (HRSA) for Centerstone's Workforce Resilience Program, to establish and expand evidence-informed/based programs and protocols to promote resilience, mental health, and wellness among Centerstone's diverse behavioral healthcare workforce, including staff from rural and medically underserved communities.

**Received \$1.88 million grant** from the Substance Abuse and Mental Health Services Administration (SAMHSA) to support Centerstone's Zero Suicide Initiative which extends suicide prevention and intervention strategies designed to raise awareness, establish referral processes, and improve care and outcomes for adults ages 25+ within Centerstone's service areas.

**Continuing to scale the use of AI-driven tools**, now available to clinicians in all Centerstone states, resulting in a 75% reduction in documentation time for clinicians and consistently high satisfaction ratings from clinical staff.

**Provided 6,100+ trainings** on evidence-based practices using simulation training (e.g., using live

actors, gamified trainings, and AI-based trainings via Lyssn) doubling the number of last year's completed trainings.

**Trained 7 Just Culture Champions, 607 managers, and 3,500 additional staff in Centerstone's Just Culture initiative**, cultivating a safe environment that provides support, guidance, and accountability for all staff and the organization.

**Established Centerstone's first Transcranial Magnetic Simulation program** in our Bloomington, Indiana clinic. During the first month of beginning this service, our team treated 3 patients, received 5 referrals, and trained 4 clinicians to provide this non-medication treatment for those with depression.

**Centerstone's Institute colleagues** have showcased our work nationally through opportunities at National Council for Mental Wellbeing Annual Conference, HIMSS Global Health Conference, National Association for Children's Behavioral Health Conference, Mindful Philanthropy's Activate Conference, a webinar hosted in partnership with Lyssn, and a guest appearance on the No Notes Podcast with Eleos.

**For a second consecutive year**, Centerstone received the Bell Seal for Workplace Mental Health Platinum Level Certification from Mental Health America. This certification nationally recognizes Centerstone as exceeding workplace practices and standards that promote positive worker mental health and well-being.

"My journey that I have been on with Centerstone for the past two years has been life-changing, eye-opening, and educational. This place is wonderful and the people are wonderful!"

*Penny, Centerstone Patient*



"This has been an exciting year of harnessing technology to streamline workflows for our providers and enhance the care experience for our patients. By implementing AI-based tools, we're gathering smarter data to inform and improve patient outcomes. Our momentum in this space continues, and we're encouraged by the progress and potential ahead."

*Ashley Newton, CEO, Centerstone's Institute*

# Impact Report: Military Services

**60,098**  
Services Provided

**7,192**  
Patients Served

**18**  
Staff Members

**Received \$700,000** in non-recurring funds from the State of Tennessee to provide mental health services for veterans and military families throughout the state.

**Steven A. Cohen Military Family Clinics received \$250,000** in funding from the Gary Sinise Foundation to provide mental health support for military service members, veterans, and their families.

**Centerstone's Military Services** CEO Dr. Blas Villalobos, COO Anna Goletz, and Centerstone's Regional CEO Anne Tyree, and Vice President for National Policy Lauren Conaboy presented at the National Council for Mental Wellbeing 2025 annual conference, a first for Military Services.

**Created four new Veteran Navigator Positions** to support operations in Indiana and Illinois CCBHC locations. These military veterans are knowledgeable about veterans' benefits, VA services, and community resources and can help veterans effectively navigate the healthcare system and information about housing, jobs, and other assistance.

**For a second consecutive year**, Centerstone's Military Services received the Military Times Best for Vets Designation through Military Times Magazine. Best for Vets is a comprehensive an-

nual ranking of the country's best employers and organizations with military-connected employment programs, benefits, and support efforts. It highlights the efforts those organizations make to recruit, retain, and support military service members, military spouses and military caregivers.

**Began managing day-to-day operations** at the Steven A. Cohen Military Family Clinic in Hinesville, Georgia, reflecting our organizations shared commitment to providing high-quality mental health care to active duty military personnel, veterans, and members of their families.

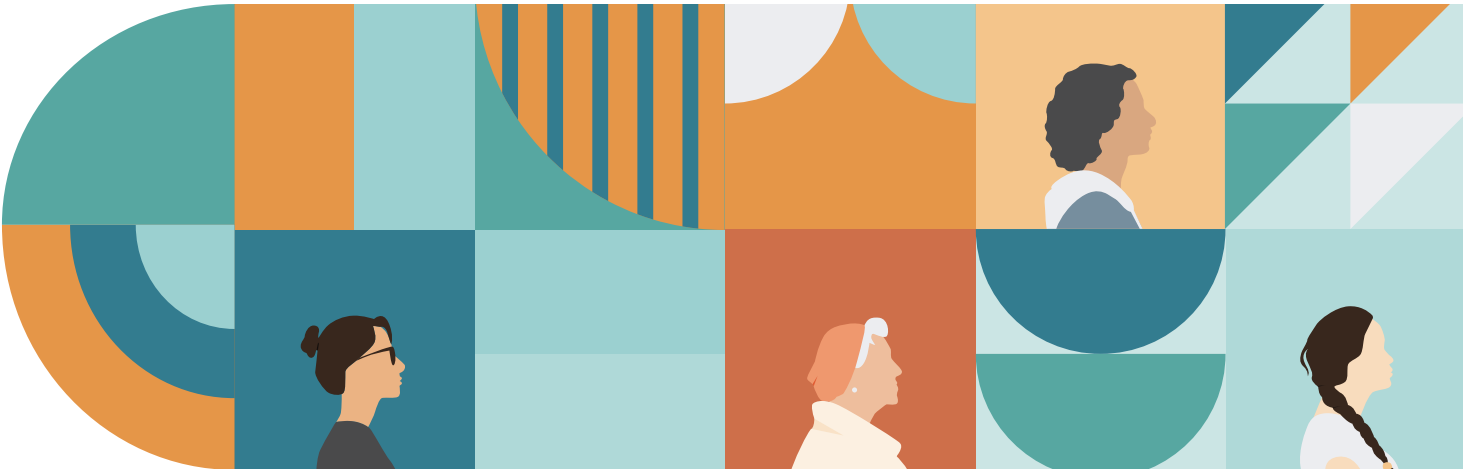
**The Steven A. Cohen Military Family Clinic** received more than \$150,000 from the Bob Woodruff Foundation to support care for military veterans and their families.

**Anna Goletz** was promoted to Chief Operating Officer for Military Services.

**In partnership with Centerstone's Institute** and with board member support, Centerstone's Military Services developed a quality metrics dashboard which allows us to track patient engagement, patient outcomes, and access-to-care data so that patients can get care more quickly.

"The Cohen Clinic at Centerstone saved my life. My therapist remembered everything I told him and took personal interest in my story. Remembering key details about literally everything. It shows he really cares about his veterans. I wouldn't be able to set the healthy boundaries I do, process the things I've endured, or regulate in tough situations without him. I am alive today because of the work my therapist and his team put into my therapy."

*Anonymous Patient, Military Services*



"I'm incredibly proud of the progress we've made in connecting more patients to the mental health services they need. By refining our outreach strategies and empowering our clinical care coordinators, we've increased our first-session connection rate from just about 50% to an impressive 69%.

This growth reflects our deep commitment to ensuring that every individual seeking help gets the care and support they deserve, starting from that very first session."

*Dr. Blas Villalobos, CEO, Centerstone's Military Services*

# Board Members

Centerstone's dedicated Boards of Directors guide our organization through their steadfast commitment to our mission. Their expertise, strategic insight, and strong leadership continue to shape our path forward. We are deeply grateful for their service and support, which strengthen our ability to deliver life-changing care and build brighter futures for the people and communities we serve.

<b>Bruce Barrick</b> , Foundation	<b>David Guth</b> , America, Military Services	<b>Ashley Newton</b> , Institute
<b>Robert "Butch" Berry</b> , America	<b>Philippa Guthrie</b> , America	<b>Nathan Nikirk</b> , Indiana
<b>Shay Binkley</b> , Tennessee	<b>Dr. Kevin Hamilton</b> , Foundation, Tennessee	<b>Dr. Jill Obremsky</b> , Tennessee
<b>Rev. Dr. Deborah Blanks</b> , Military Services	<b>Sharon Harlin</b> , Indiana	<b>Pastor Robert Phillips</b> , Illinois
<b>Miguel A. Blancarte, Jr.</b> , Illinois	<b>Anthony Henderson</b> , America	<b>Nedda Pollack</b> , Foundation, Institute
<b>Bonnie Brackett</b> , Illinois	<b>Dr. Hal Higdon</b> , America	<b>Ramona Rhodes</b> , Foundation
<b>Lee Brackett</b> , America	<b>Marvin Hill</b> , Military Services	<b>Waverly Robinson</b> , Illinois
<b>Brad Bowlin</b> , Military Services	<b>Jennifer Horning</b> , Indiana	<b>Linda Rosenberg</b> , Institute
<b>Ann Campbell</b> , Florida, Military Services	<b>Sara Huggins</b> , America	<b>A John Rose</b> , America, Institute
<b>Lisa Campbell</b> , Institute	<b>Tom Johnson</b> , Illinois	<b>Dr. Nick Sanders</b> , America
<b>Kelly Crockett</b> , Tennessee	<b>Susan Kidder</b> , Illinois	<b>Kate Satz</b> , Tennessee
<b>Don Crosby</b> , America	<b>Sandy Kinsey</b> , America	<b>Travis Shepherd</b> , Indiana
<b>Justin Daniels</b> , Indiana	<b>Timothy Knowles</b> , Florida	<b>J. Reneae Staley</b> , Indiana
<b>Paul Deal</b> , America	<b>Suzanne Koesel</b> , Indiana	<b>Ashley Stevens</b> , Indiana
<b>Brian DeGennaro</b> , Military Services	<b>Timothy Knowles</b> , Foundation	<b>James Sweeten</b> , America
<b>Terrye Davidson</b> , Indiana	<b>Phil Krebs</b> , America	<b>Elphanie "Sissy" Swift</b> , America
<b>Laurie Dickerson</b> , Indiana	<b>Douglas Leonard</b> , Indiana	<b>Jacob Tate</b> , Tennessee
<b>Dr. Hannah Dudley</b> , Tennessee	<b>Tony London</b> , Indiana	<b>Colleen Thayer</b> , Florida
<b>Ronda Dunn</b> , Foundation, Illinois	<b>Patricia Lucas, PhD</b> , America	<b>Dr. Raghu Upender</b> , Institute
<b>Bridget Eastwood</b> , Indiana	<b>Kristan Mallett</b> , Illinois	<b>April Van Epps</b> , Florida
<b>Steve Edwards</b> , Missouri	<b>Bruce Malone</b> , Illinois	<b>Dr. Blas Villalobos</b> , Military Services
<b>Mike Enos</b> , Military Services	<b>Tom Mahler</b> , Foundation, Institute, Military Services	<b>John Voigt</b> , Foundation
<b>Reed Farley</b> , America, Military Services	<b>Fern Martin</b> , Illinois	<b>Lorenzo Waiters</b> , Florida
<b>Mark Faulkner</b> , Institute, Tennessee	<b>Geoff McKim</b> , Indiana	<b>Jack Wallace</b> , Foundation
<b>Richard Fitzgerald</b> , Foundation	<b>Shane McSimov</b> , Tennessee	<b>Chief Paul Williams</b> , America
<b>Patricia Fisher</b> , Illinois	<b>David J. Melby, PhD</b> , Illinois	<b>Lisa Williams</b> , Florida
<b>Rhonda Friend</b> , Indiana	<b>Stephani Meyer</b> , Illinois	<b>Dr. Bob Williams</b> , Indiana
<b>James Galindo</b> , Military Services	<b>Ben Middleton</b> , Tennessee	<b>Mary Wilson</b> , Foundation
<b>Tom Gaunt</b> , America	<b>Jonathan Morphett</b> , Institute	<b>Phyllis Wolfram</b> , America
<b>Jacob Giesecke</b> , Tennessee	<b>Eden Murrie</b> , Military Services	<b>Amy Wrightson</b> , Florida
<b>Rev. James Golden</b> , Florida, Foundation	<b>Scott Neu</b> , Tennessee	

# Donors

We extend our heartfelt thanks to our amazing donors, who are on this mission with us. Your contributions made a tremendous impact and continue to do so today. You help ensure patient care is possible for so many, fund innovative services, refresh our facilities, and equip our clinical teams with the latest in evidence-based treatments that saves lives. We thank you for helping us make an incredible difference for our patients, our staff, and our communities!

<b>1st Mid America Credit Union</b>	<b>Alton Community Unit School District #11</b>	<b>Azzip Pizza</b>	<b>Melaton Bass Shelton</b>
<b>360 Privacy, LLC</b>	<b>Alton Foundation</b>	<b>Babe's Plumbing</b>	<b>Kayleigh Baucom</b>
<b>9th Avenue Foundation</b>	<b>Alton Refrigeration &amp; Home Furnishings</b>	<b>Courtney and James Bach</b>	<b>Renee Bauer</b>
<b>A to Z Autos</b>	<b>Alton Woman's Home Association</b>	<b>Leanne and Robert Backmeyer</b>	<b>Baugh Fine Print &amp; Mailing</b>
<b>Jarrett and Melissa Aaron</b>	<b>Susanne Alvis</b>	<b>Areli Baez</b>	<b>Shane Baxley</b>
<b>John Abbott</b>	<b>Amy Alward</b>	<b>Mirza Baig</b>	<b>Beachside Lighting</b>
<b>Ashlie Adams</b>	<b>Ameren Illinois</b>	<b>Kennette Bailey</b>	<b>Bonita Beam</b>
<b>Brendan Adams</b>	<b>American Online Giving Foundation</b>	<b>Lisa Bailey</b>	<b>Lee and Julie Beaman</b>
<b>Julie Adams</b>	<b>Regine Anderson</b>	<b>Megan Bailey</b>	<b>Carol Bean</b>
<b>Karla Adcock</b>	<b>Stephen Anderson</b>	<b>Michelle Bailey</b>	<b>Dan Bean</b>
<b>Kristina Adkins</b>	<b>Alissa Andrews</b>	<b>Rebecca Bailie</b>	<b>Mike Beard</b>
<b>Melanie Adkins</b>	<b>Heather Andrews</b>	<b>Lindsey Baine</b>	<b>Lyle and Lisa Beasley</b>
<b>AES Solar</b>	<b>Sarah and Philip Andrews</b>	<b>Baird Foundation, Inc.</b>	<b>Carol Beatty</b>
<b>Aetna</b>	<b>Joe Angers</b>	<b>Sonia Baker</b>	<b>Karen and Alaina Beck</b>
<b>AF Group</b>	<b>Anonymous Donors (170)</b>	<b>Vince Baker</b>	<b>Bedford Federal Savings Bank</b>
<b>Ajax Paving Industries of Florida, LLC</b>	<b>Lynsey and Zac Ansaldo</b>	<b>Jean Balaguras</b>	<b>Rachel Behrend</b>
<b>Kimberly Akin</b>	<b>Answer Midwest, Inc.</b>	<b>Sydney Ball</b>	<b>Shannon and Mick Beisel</b>
<b>Carl Albano</b>	<b>Jose Antunes</b>	<b>Bank of Herrin</b>	<b>Morgan and Nikki Bekkerus</b>
<b>Kellie Albee</b>	<b>Argosy Casino Alton</b>	<b>Barry and Jean Ann Banker</b>	<b>Morgan Belle</b>
<b>Donna and George Alewelt</b>	<b>Jacob Arguelles</b>	<b>Banterra Bank</b>	<b>Ben Lazare Consulting</b>
<b>Patrick Alexander</b>	<b>Anthony Arington</b>	<b>Brenda and Jim Barker</b>	<b>Kelly Benedict</b>
<b>All-American Pest Control Foundation</b>	<b>Andrea Armstrong</b>	<b>Tammy Barnett</b>	<b>Coreen Benham</b>
<b>Tari and Chris Allan</b>	<b>Teresa Armstrong</b>	<b>Kendall Baron</b>	<b>Audrey Benitez</b>
<b>Blythe Allen</b>	<b>Cynthia and David Arnholt</b>	<b>Dennis and Patricia Barrell</b>	<b>Eileen and Michael Bennett</b>
<b>Burkley and Newton Allen</b>	<b>Gladys Arnold</b>	<b>Bruce and Julie Barrick</b>	<b>Luke Bennett</b>
<b>John Allen</b>	<b>Rebecca Arnold</b>	<b>Bruce and Julie Family Charitable Fund</b>	<b>Katie Bergeron</b>
<b>Lawson and Mary Allen</b>	<b>Shawn Auguatine</b>	<b>Kim and KC Barrick</b>	<b>Natalie Bergeron</b>
<b>Mary Lauren and Lawson Allen Family Fund of The Community Foundation of Middle Tennessee</b>	<b>Monica Aurand</b>	<b>Barriere Construction</b>	<b>Lara Bergstedt</b>
<b>Patricia Allen</b>	<b>Kaitlyn Averso</b>	<b>Amey Barringer</b>	<b>Jeanine Bernache</b>
<b>Sallie and Jimmy Allen</b>	<b>Andrea Waitt Carlton Family Foundation</b>	<b>Adam Barth</b>	<b>RaeAnn Berry</b>
<b>Theodore Allen</b>	<b>Gail and Raul Ayala</b>	<b>Annette and Dennis Barth</b>	<b>Jessica and Michael Bertolozzi</b>
<b>John Allsopp</b>	<b>Janet Ayers</b>	<b>Dennis A. Barth Landscape Architect LLC</b>	<b>Bethany Legacy Foundation</b>
<b>Deandra Almeida</b>	<b>James and Therese Aylward</b>	<b>Linda Barth</b>	<b>Jodie Bielman</b>
<b>Vera and Frederick Alstat</b>	<b>James and Therese Aylward Charitable Fund</b>	<b>Lisa Barth</b>	<b>Liz Billings</b>
		<b>Mary Barth</b>	<b>Rebecca Billings</b>
		<b>Mary Barton</b>	<b>Sarina Billiter</b>



Bradley Bills  
Megan Bily  
Russell Binder  
Shay Binkley  
Aubrey Bird  
Peter and Karen Bird  
Bird Family Advised Fund of  
The Community Foundation  
of Middle Tennessee  
Bishop Enterprises  
Bishop-Parker Foundation  
Molly Biss and Rob Hawley  
BJC Healthcare  
Black Diamond Family of  
Businesses  
Helen Blackburn  
Melissa Blackburn  
Michael and Theresa  
Blackburn  
Kristine Blackwell  
Sara Blackwell  
Heidi Blair  
Miguel Blancarte, Jr.  
Ann Blankenship  
Robert Blankenship  
Rev. Dr. Deborah K. Blanks  
Amanda Blinkhorn  
Stacy Bliszc  
Marcie Bloodworth  
Bloomingfoods Co-Op  
Market  
Bloomington Tri Kappa  
Blue Star Families  
BlueCross BlueShield of  
Tennessee Inc.  
Blues for Kids  
Bob Woodruff Foundation  
Alissa and Brock Bodart  
Boeing Global Engagement  
Boh Brothers Centennial  
Fund  
Bonefish Grill  
LaMar Bontrager  
Molly Book  
Katie Booth  
Heather Borghesi  
Andrea Bosch  
Angela Bostelman  
Tina Boucher  
Sarah Bouldin  
Susie and Larry Bowie

Rhonda Bowles  
Brad Bowlin and Alicia Jayo  
Susan and Raymond Bowling  
Susan and Raymond Bowling  
Family Fund  
Christina and Neil Boyer  
Leesa Boyer  
Madison Bracken  
Bonnie and Lee Brackett  
Renate Braddy  
Bradford Family Foundation  
Lillian Bradford  
Bradley Building Products  
Jessica Branch  
Teresa and Michael Brandon  
Lucia Branton  
Crystal Braucher  
Michelle Braughton  
Kelsey Bridges  
Judith Bright  
Kathy Broder  
Tami Brodsky  
Stephanie Bronzino  
Karen and Phillip Brooks  
Shauna Brooks  
Timothy Brooks  
Rosemarie Brower  
Brown & Brown of Florida,  
Inc.  
Brown County Community  
Foundation  
Brown County Drug Free  
Coalition  
Erik Brown  
James Brown  
Kendra Brown  
Mary Brown  
Timeca Brown  
Jayne Browning  
Barbara Brownyard  
Mark and Lauren Brueggen  
Christopher Brunk  
Sheryl Bryant  
Alexander and Ann Buchanan  
Alexander Buchanan  
Budslick Development  
Lisa and John Budslick  
Avery Burke  
Keely Burns  
Susan and Kent Burns

Robert Burress  
Susan Burris  
Beverly Buss  
Meagan Bussert  
Alexander Bustillo  
Daphne and Alfred Butler  
Michael and Olivia Butler  
Tanya Butler  
Karen Byassee  
Jennifer Byrne  
Caesars Foundation  
Sharon Cagle  
Cahaba Wealth Management  
April Cain Kate Cain  
Angie Caldwell  
Maria and Billy Ray Caldwell  
Ronda Call  
Susan Callahan  
Erin and Tyler Camfield  
Ann and John Campbell  
Glenda Campbell Mr. and Mrs.  
John Campbell  
Lisa Hooker Campbell  
Family Fund, A Fund of  
the American Endowment  
Foundation  
Susan Campbell  
Tiffany and Jef Campbell  
Sheena and Danny Canniff  
Valerie Cantrell  
CapitalSpring  
Tessica Caradine  
Alexandra Caragiulo  
Carbondale Interfaith Council  
Ana Carino  
Brigette Carlock  
Jennifer Carlomany  
Jill D. Carlson Fund, Greater  
Seymour Trust Fund  
Ida and Chris Caro  
Katherine Carreira  
Lynne Carter  
CASL, Inc. - Community  
Assisted & Supportive Living,  
Inc.  
Veronica Cassetta  
Anthony Cassiol and Kalinda  
Fisher  
Kendra Castelli  
Doris Castillo  
Fernanda Castro

Susanne and Todd Cato  
CEFCU  
Centinel Community Fund  
Sandy Chan  
Scarlet Chancey  
Samantha Charter  
Chattanooga Alumni Chapter  
of the Sigma Chi Fraternity  
Pandora Cheatham  
Mrs. Aveniel Cherry John T.  
Cherry Foundation, Inc.  
Tina Chidster  
Ixchel Chong  
Kathleen O'Brian Christoff  
and Dennis Christoff  
Christopher Nathan Emery  
Fund  
City Wide Facility Solutions  
Scott Claire  
Julie Clark  
Karen Clark  
Raja Clark  
Robert Clark  
Tesa Clark  
Travis Clark  
Will Clark  
Kelly Wilson Clark  
Clarksville-Montgomery  
County Community Health  
Foundation  
Matthew Clawson  
Erin Clay  
Kristin Clay  
Terence Clay  
Dianna and Shedrick  
Claycomb  
Andrew Clayson  
Clear-Armor, LLC.  
Clearwave Fiber  
Clifton Mill, An Independent  
Stave Co. Subsidiary  
Climatic Conditioning Co., Inc.  
Anastasia Cobb  
Jason Coblentz  
Coca Cola Consolidated, Inc.  
Cohen Veterans Network  
Chase Cole  
Michelle Cole  
Cole Family Virtuous Cycles,  
a component fund of the  
Community Foundation of  
Bloomington and Monroe  
County

Lynn Evans Coleman and  
John Coleman  
Melissa Collette  
Ashley and William Collins  
Jennifer Collins  
Overton and Amy Colton  
Colton Family Advised  
Fund of the Community  
Foundation of Middle  
Tennessee  
Comer Nowling & Assoc.  
Community Behavioral  
Healthcare Association of IL  
Community Foundation of  
Bloomington and Monroe  
County  
Community Foundation of  
Sarasota County  
Community Foundation of  
Southern Indiana  
Lauren Conaboy  
Tiquan Conley  
Lori Connor  
Karen and David Conrad  
Tamra Conreux  
Constellation Wealth  
Advisors  
Convergenz  
Jennifer Cook  
Stephen and Shannon Cook  
Amanda Cooper  
Ken Cooper  
Jeffrey Coopes  
Rita Cope-Messer  
Amanda Corder  
Bridgette Cordova  
CoreCivic Foundation  
Catherine Corlew  
Janelle Cornwell  
Stephanie Cottrell  
Andres Couallasi  
Elizabeth and Richard  
Courtney  
Justin Coury  
Rocco Cout  
Leah Cover  
Carol Cox  
Kelley Craig  
Credico USA LLC  
Theresa Creecy-Green  
Bob Cremerius  
Kelly Crockett

Kelly P. Crockett Fund  
Theresa Crowe  
Jesse Crowel  
Vera Crowl  
Stephanie Crowley  
CSX Transportation  
Grace Cuff  
Harold Cullison  
Patti Culp  
Cumberland Trust  
Charlene Cunniffe  
Tabitha Cunningham  
John Curley  
Curley Charitable Fund  
Patrick Currier  
Cary and Julie Curry  
Melissa Curtis  
Tracey and Michael Curtis  
CustomInk, LLC  
Angela and Jordan  
Czerwinski  
Kenya Dabney  
DAFgiving360  
Taylor Dahlgren  
Joey Dalton  
Ryan Dalton  
Carly Dandrea  
Amanda Darnell  
Kevin Daubar  
Daughters of Isabella #959  
Terrye and Mark Davidson  
Bonnie Davis  
Demeria Davis  
Heather Davis  
Janel Davis  
Joan and Jerry Davis  
Justin Davis  
Kayla Davis  
Molly Davis  
Nicole Davis  
Terri Davis  
Anthony Day  
Deaconess Illinois Medical  
Center  
Geraldine DeBianchi  
Maria DeBianchi  
Benjamin Deblois  
Emily and Bill DeCamp  
Deborah Decker

Andre and Cheryl DeCraene  
Brian DeGennaro  
Kristin Degler  
Elena Del Favero  
Nanette DeLancey  
Emily Dellamano  
Jayne Dellamano  
Edwin and Kim DeMoss  
Pamela and Timothy Denison  
Elizabeth Dennis  
Robert Dennis  
Detwiler's Farm Market  
Dawn DeVore  
Ashlyn Dewitt  
Janet DeWitt  
Jay and Wilma DeWitt  
Wendy DeWitt  
Jessica Di Rico  
Christina Diaz  
Sharon Diaz  
Kevin and Susan Dick  
Laurinda and Stephen  
Dickerson  
Sim Diehl  
Emily DiLandro  
Audrey Dingeman Ashley  
Smith Dinkins  
Diversity Health Services, Inc  
Kathy Dobbs  
Isobel Doborwicz  
Ann Birdwell Dobson and  
Matt Dobson  
Paulette Docktor  
Paula Dodge  
Diane Doerr and Kristine  
Cleland  
Dogs In A Pile  
Hannah Dollar  
April Donaldson  
Timothy and Jean Douglas  
Trevor Douglas  
Kristen Doyle  
Brittany Drawbaugh  
Paul Driscoll  
Benjamin Driver  
Catherine and Mark Droste  
Rebecca Drum  
Deena Drummond  
Hannah and Nathan Dudney  
Sophia Dudon

James Dugdale  
Michelle Dugger  
Nikki Dugger  
Duke Bakery  
JoAnne Duke JoAnne Duke  
Irrevocable Trust  
Lorie and Gavin Duke  
Thomas Duley  
Angela Dunbar  
Ronda and Randy Dunn  
Nichole Dunning  
Michelle Duong  
Ceri Duplica  
Blair and Kelley Durham  
Dawn Dustman  
Lucy and Gregory Duvall  
Dye, Harrison, Knowles,  
Kirkland, Pratt & Depaola,  
PLLC  
Laurel Eakes  
Lake and John Eakin  
Andrew and Janet Earnest  
Meaghan Easton  
Ree Easton  
Eastside Lumber Yard Supply  
Company, Inc,  
EBS Foundation  
Angelina Echevarria  
Gary Eckardt  
Christina Eddington  
Cynthia and Terry Edens  
Edison's  
Brandi Edstrom  
Barbara Edwards  
Kaci Edwards  
Lauren and Michael Egelhoff  
Lisa Eggebeen  
Michele Ehrhart  
James and Melissa Ehrmann  
Ellenton CPA  
Darlene Ellinger  
Daphne Elliott  
John Elliott  
Kipley Elliott  
Maurice Elliott  
Hayden Ellis  
Nicole Ellis  
Maretta Ellison  
Tresha Elston  
Alysia Elwood



David and Ella Elwood	FirstFleet, Inc.	Phyllis and Steve Fridrich	Give Lively Foundation Inc.	Gulf Coast Builders Exchange	Krystal Haseltine	Suzanne Herrmann	Sara and Fred Huggins
Oliver Emberger	Patricia Fischer	Patricia Friedel	Kevin Glasgow	Gulf Coast Community Foundation	Andrea Hatch	Holly Hertzog	Phil Hummel
Jennifer and Dave Embree	Terry and Sarah Fischer	Rhonda Friend Friends of Dave Severin	Tara Glenn	Anita Gulley	Joseph Hayduk	Jennie Heskett	Venee Hummel
Eminence Community Schools	Alexis Fisher	James Fries	Jacqueline Goble	Gumbo 2 Geaux	Lucas Hayes	Byron Hetzler	Jessica Humphrey
Diane Emmons	Farrah Fishman	Elizabeth and Bryan Frist	Debbie Godbey	Carol and David Guth	Renee and Chris Hayes	Raina Hickman	Michelle Hunt
Mike and Sara Enos	Phyllis Fitch	The Honorable Bill Frist and Mrs. Tracy Frist	Jo Anne Goheen	Arlie Haddix	Tara Hayes	Gail High	Christina Hussain
Enviro-Tech Termite & Pest Control, Inc.	Tonya Fitch	Jennifer and William Frist	Rev. James T. and Mrs. Mildred M. Golden	Vince Hafeli	Carey Haynes	Hikma Pharmaceuticals, Inc.	Alicia Hyatt
Equitable Analytics	Fitlife Foods	Julie and Thomas Frist	Lowell and Ellie Goldman	Barbara and Paul Hagood	Jane and Brevard Haynes	Lauren Hill	Illinois Association of Rehabilitation Facilities
Stephanie Ervin	Peggy and Dick Fitzgerald	Savannah Frizzell	Mitch Goldstein	Elizabeth Hail	Tracy and Raymond Haynes	Marvin and Sharon Hill	Illinois Behavioral Health Workforce Center
Peggy Erwin	Richard and Virginia Fitzgerald	Stephen and Michelle Frohsin	Vicki and Kurt Golemo	Shannon Hajji	Hays Foundation	Hillcrest Apartments	Illinois Children's Healthcare Foundation
Kathleen and Alec Estes	Liz and Brennon Fitzpatrick	Steve and Ann Front	Aaron and Anna Goletz	Maria Halcomb	Mary Fran Hazinski and Ames Davis	Nancy Hilligoss	
Beky and Michael Evans	Fitzpatrick Charitable Account at Schwab Charitable	Paula Fulton	Therese Goletz	Shauna Hale	HCA Florida Sarasota Doctors Hospital	HireLevel	Sandy Imanse
Marla Evans	Five Below	Craig Furry	Susan Golliher	Half Bottle Bistro	HCA Management Services	Lauran Hirschi	Impact100 SRQ
Emma Evener	Flamingo Cay, LLC	Zoe Gaither	Andres Gonzalez and Kimberly Adams	Ashleigh Hall	Heartwork Brewing	Sarah Hittos	Lee Ann Ingram
Andi Evers	Caleia Flannigan	Julie and Albert Gale	Dominic Gonzalez	Brad and Megan Hamilton	Janette Heath	Elizabeth Hoffmann	Inspired Brands, Inc.
Beth and Kevin Evetts	Joseph Flara	James Galindo	Yvonne Gonzalez	Kevin and Christy Hamilton	Isaac Hedengren	Amy Hoffner and Scott Gettle	InvisAlert Solutions - ObservSMART
Henry Evetts and Payton Kinler	James and Emily Flautt	Gallagher Bassett Services, Inc.	Stacy Goode	Roger and Irmgard Hamner	David Heilman	Dawn Hogue	Deanna Iovino
Nancy Ezell	Flautt Family Fund	Valerie Gallardo Banks	Kelly Gooden	Donna Hancock	Alex Ann Heim	LeeAnder Holden	Ironwood Fabrication Inc.
Sherry Fajura	Kimberly Fleck	Marilyn Gannon	Valencia Gooden	Jennifer Hannon and Sam DeVane	Cailah Heinrich	Sierra Holden	Briana Irwin
Deborah and Larry Falk	Fleet Feet Clarksville	Jayson Garcia	Gillian Goodhue	DeVane Charitable Family Fund	Susanna Heising	Jenny and Larry Holder	
Jordan Fangué-Nelon	Carol Fleming	Nathan Garcia	Jeanna Goodson	Vale Hannon	Melissa Helm	Holiday World & Splashing Safari	J.E. Charlotte Construction Corp
Laszlo Farkas	Michael Fleming	Charlene Gardner	Linda Gotkin	Kendall Hanson	Bianca Helmer	Holland & Knight LLP	Becky Jack Jackson County Mental Health (708) Board
Reed Farley	Wendy Fletcher	Kerry Garner	Grace Community Church	Sarah Harding	Helmkamp Cares Foundation of the St. Louis Community Foundation	Julia Hollinger	Devona Jackson
Jenna Farmer-Brackett	Florida Department of Health	Randy Garvison	Tronzo Graham Pamela O'Connor Granja	Impingo Hardmon	Teresa Hencke	Victoria Hollis	Edward and Annie Jackson
Reilly Farr	Julie Fluker	Gary A. Little, Attorney at Law, PSC	Elena Graves	Matthew Hardy	Jeff and Beth Henderson	Hollywood Casino Amphitheatre	Gretchen Jackson
Sherril Farr	Food A Fare	Gateway Grizzlies	Teddi and Bryan Graves	Sarah Hare	Joshua Henderson	Steven and Leslie Holman	Karrie Jackson
Ron and Laurie Farris	Food Service Resources	Dana Gau	Sherri Grays	Gabriel Harkey	Hendrick Honda Bradenton	Holman Giving Fund	Marissa Jackson
Ron and Laurie Farris Family Advised Fund of The Community Foundation of Middle Tennessee	Samuel Foskey and Linda Benz	Seth Gau	Nicole Greathouse	Marlene and Michael Harkey	Teri Hendricks	Melissa Holmes	Molly and William Jackson
Mark and Sue Faulkner	Bella Foss	Keisha Gegg	Debbie Green	Sharon Harlin	Hendrickson	Sheryl Holton	Matthew Jacquot
Mindy Feazel	Jada Foster	Tina Gellinger	Krysten Green	Jessica Harman	Laura Henkenmeier	Home Depot	Jennifer Jagggers
Elizabeth Felsman	Joshua Foster	General Dynamics OTS	Kim Greene	Matthew and Danylle Harman	Christina Henney	Honeybee Vintage Boutique	Jenelle James
Rhonda Felts	Kelly Foster	Genoa Healthcare	Kama and Kaylen Greenleaf	Jennifer Harmon	Khadijah Henry	Heather Honeycutt	Jan-Pro of Manasota
Rita Felty	Dale Fowler	Gail Gerbig	Jeffery Greer	Paige Harmon-Niles	Mr. and Mrs. Raymond Hensler	Collins Hooper	Cathy Jarvis
Danette Fessler	Rich Fowler	Nesreen Ghnaim	Candice Griego	Sue Harpole	Andy and Angie Hentz	Laurie and Steven Hooper	Ryan Jasper
Anita and Charles Fields	Jenna Fox	Sherry Gibbens	Meredith Griffith	Harrah's Casino	Heritage Fund, The Community Foundation of Bartholomew County	Hoosier Hills Credit Union	JDog Junk Removal & Hauling
Jacqueline Figueroa	Sally Frame	Annie Giden	Daniel Grisham	Sheila Harrell	Elizabeth Hernandez and Deanna De La Rosa	Robin Hopp	Patricia Jeka
Jennifer Fillmore	Franklin County Homemakers Ed Assoc.	Jacob and Morgane Giesecke	Sherri Grochulski	Conner Harris	Dr. Jason Hernandez	Jennifer Horning	Jenkins & Wynne Ford, Lincoln Honda
Gina Fioto	Jennifer Deicke Frantz and Rob Frantz	Monica Gilbert	Samantha Gross	Darlene Harris	Peter Hernandez	Rachel and David Hornsby	
First Bank Richmond Community Foundation	Leah Fraser	Shatonia Gilbert	Corissa Grothe	Gina Harris	Julie and Justin Herren	Judy Horowitz	Casey Jenkins
First Command	Allegra Frazier	Heather Gillam	Nicole Grotschel	James and Sara Harris	Rosalie Herrera	Tanya Horton	Joy Jensen
First Mid Bank & Trust Company	Vonda Fredette	Christina Gillim	Linda Grove-Paul	Jennifer Harrison	Herrin Drug	Eri Hotta	Elise Jerrels
First Southern Bank	Alyssa Freniere and Harvey Sellers	Jenny and Phillip Gilmore	GRP Wegman Company	Kimberly Harrison	Herrin Elks	Karen Houseman	Roger Jeter
	Grazia Fricano	Mike Gineo	Thomas Grube and Rita Nolind	Sherry and William Harrison	Herring Technology	Kate Huber	Yuqi Ji
		Sean and Cara Gingras	Elizabeth Guice	Mary Harsin		Kathryn Huck	Bonnie Johnson
		Matthew Gipson	Julie Guill	Melissa Hartman		Mary Hudson	Julia Johnson
				Jake Hartvigsen		Becky Hudzik	Kerrie and John Johnson

Laticia Johnson	Lynda Killoran	Laura and Tom Landstreet	Chevy Little Keesey	Fern Martin	Geoff McKim and Amy Cornell	Katlynnne Mitchell	Nathan Nehrt
Lindy Johnson	Michelle King	Michael and Carolyn Langan	Becky Little	Herb Martin		Yvonne Mitchell	Pennie Nelson
Roger and Cathie Johnson	Nora King-Foster	Darsie Lanke	Rene Llewellyn	Lance Martin	Cassie and Matt McKinney	Nicole Mobley	Anne and Thomas Nesbitt
Sarah Johnson	Mark Kinnick	LaRoche Family Foundation	Cella Logan	Sheila Martin	Melissa Mckinney	Daniel Moctezuma	Sally and Jonathan Nesbitt
Steve Johnson	Erin Kinsey	Yolanda Doyon Larviere and Mark Lariviere	Monette and Stephen Logue	Tricia Martin	Dahman McKinnon	Gregorio Moctezuma	Scott and Heather Neu
Tom and Nancy Johnson	Gail Kiplinger	Jennifer Laskowski	Deanna Lomax	Luis Martinez	Patti McLinden	MolinaCares	New Balance Sarasota
Wendy and Tim Johnson	Shelley Kirchner	Kenneth Lass	Tony London	John and Judy Martinko	Coleen and Phil McMahon	Lori Monahan	New Castle Wings, Inc.
Alex Jones	Deborah Kirk	John and Cindy Lassing	Paola Lopez	Catherine Marx	Ryan McMahon and Mindy Longjohn	Viviana Montero	New Hope Christian Church
Isaiah Jones	Devon Kirkley	Nick Latsko	Heather Louis	Concepcion Masias	Coley and Collin McMillan	Carolyn Montgomery	Ashley Newton
Kiya Jones	Kimberly Kirksey	Sue and Ken Laughlin	Nancy and Steve Low	Kristina Mason	Zack and Aimee McMillin	Donald Monty and Anne Gaylord	Sheila Niccum
Nathaniel and Allyssa Jones	Christine Kiser	Jessica Laux	Brenda Lowe	Jennifer Massaro	Kimberly and Ferrill McRae	Alexis Moore	Jeremy Nichols
Robert Jones	Jacob Dylan Kitts	Maggie Lavery	Patricia Lucas	Donna Massey	Shane McSimov	Chris Moore	Timothy Nichols
Terry Jones	Kim Kitzmiller	Miranda Lawton	Lucianna's Bistrot & Patisserie	Deepa Mathew	Leigh Anne McWhorter	Christopher and Katherine Moore	Karissa Nicole
Christy Josten and Bill Cochran	Kiwanis Club of Carbondale	LBMCM Cares Foundation	Jason Luellen	Frank Matlock	Medallion Home	Haley Moore	Nathan and Amy Nikirk
Joy of Giving, Incorporated	Adrienne and Robert Knestrick Alysia Knight	Juliette Le Corre	Jeff Lukowsky	Andrew Matthews	Robert and Karla Mees	Margaret Moore	Nira Health
JSPA Law	Knights of Columbus Marion	Laurie Lebo	Edwin Lundy	Michael Mauk	Adri Mejia and Jillian Kinney	Ideliz Mora-Cruz	Darrell Nixon
Christopher Judge	Timothy and Susan Knowles	Lauren and Gregory LeClaire	Dena Lunsford	Shanea Mays	David and Elaine Melby	Crystal Morales	Brad Nocek
Kathleen Judge	Prasad and Amita Kodali	Abby Lee	Walter and Linda Lysinger	Millicent and Jeremy McBride	Donna Mellencamp	David Moran	Madaline Nolen
Judith Bright, LLC.	Bobbi Koeppen	Anna Lee	Patrick MacArevey	Denny McCabe	Emily Melvin	Jonathan and Molly Morphett	Robin Norman
Junior League of Nashville	Suzanne Koesel and Sandy Pate	Chad Lee	Emily Macdonald	Jenny McCabe	Aimee Menard	Tim Morrell	Northeast Florida Women Veterans, Inc.
Barbara Jurina	Kokopelli Golf Club	Peter and Katherine Lee	Christopher Mackison	Robert McCabe	Alexis Mendenall and Jaidyn Short	Alana Morris	Amy and Will Norton
Patricia Justice	Ava Konstantinidis	Scott and Wendy Leftwich	Jim Maddi	Jason McCalla	Marie Meranda	Karen Morris	Kevin Norton and Frank Mamone
Alexis Kalish	TJ Kornett	Leftwich Family Fund	Gloria Madrid	Frances McCarron	Darcey Meridith	Randy Morris	Susan Nova
Casey Kania	Peter Kraft	Legence Bank	Andrea Magyar	Jessica and Chase McCarthy	Merit Electric Co., Inc.	Mossy Stone Irish Pub	Gregory and AnnMarie Novak
Angela Kasapakis	Ryan Krajewski	Mark Leggio	Thomas and Debra Mahler	Tyler McCarthy	Brian Meyer	Peggy Motel	Helen Nowak
Victoria and Russell Kastor	Marilyn Krankel	Sarah Leinicke	Crystal Majors	Amanda McClellan	Stephani and Willard Meyer	Chris and Marie Mowbray	Misael Noyola
Melissa Kayan	Richard Krause	Keely LeMaster	Suesan Maleki	Hannah McClellan	Kelly Michaud	Kathleen Moye	Abigail Nunez
Kim Kaytor	Philip and Diana Krebs	Tara Lentz	Kristan Mallett	McCluskie-Miller Funeral Home	Benjamin and Barbara Middleton	MSB Cockayne Fund, Inc.	Ruth Nunley
KBSI FOX23	Sherry Krickel	Elena Leombruno	Bruce and Paula Malone	Hollie McClusky	Pierce Mihailoff Mike and Teresa Nacarato Foundation II	Karla Mullen	Brad and Gina Nunn
Karen and Danny Keene	Pamela Krier	Helen Leon	Manatee Community Foundation	Elzie McCord		Lauren Munn	Danielle O'Donohue
Joshua Kegley	Kroger	Douglas and Laura Leonard	Karen Mann	Arika and Xynethia McCormack	Jada Mike	Tapiwa Mupereki and Rutendo Nkomo	David O'Neill
Rebecca Keller	Kroger Rewards	Jennifer Levens	Robert and Suzanne Mann	Derek and Ethan McCormack	Shawna Mikesell	Rachel Murar and Connor Kelly	Steven O'Neill
Scott and Brittnie Kellerman	Kyle Kromraj	George Levins	James and Dorothy Manning	Michele McCormick	Grace Milan	Sabrina Murphey	Melise Oakley
Matthew Kellum	Mark Krones	Scott Lewellen	Daniel Mansfield	Christopher McCoy	Milek Media, LLC	Ashley Murphy	Oakmont Capital Resources, Inc.
Melanie Kelly	Orville and Patricia Kronk	Amanda Lewis	Michael and Linda Mansperger	Bernadine McCracklin	Mandy Milek	Brenden Murphy	Oasis Skin and Wellness Center
Wendy Kelly	Rona Krueger	Judy Lewis	Elefteria Mantzaris	Brittany McCrady	Military Officer Association of America	Chris and Staci Murphy	Jill and William Obremskey
Kendra Scott	Gary and Glenda Krutsinger	Stephanie Lewis	Tiffany March	Lauren McCree Bianca McDermott	Bonnie Miller	Ruszella Murphy	Daleen O'Dell
Kendrick Foundation	Emily Kurtz	Carli Lewoczko	Jennifer Marciniak	Tricia and Doug McDowell	Cork Miller	Eden and Jon Murrie	Jean and Patrick O'Hara
Kallie and Ryan Kennedy	Shelby Kurtz	Jiewen Li	Matthew Marcinial	Donald McEachern	Michael Miller	Stephanie Myers	Old National Bank
Kentucky Veterans Program Trust Fund	Kristen Labatsky	Liberty Bank	Sherri Marcum	Anita McGillin	Sabrina Miller	Debra Myrick	Olga's Kitchen
Patrick Keyser	Laborers' International Union of North America Local 773	Chris Liljedahl	Mark Margolis	Patrick and Colleen McGinley	Sherry Miller	Teresa and Michael Nacarato	Alexa Olivas
Lindsey Kidd	Kalipzo Labra	Fernanda Lima	Todd Markel and Allyson Chesser	Dianah McGreehan Kim McGriff	Audrea Mills	Alicia and Chad Nale	Olive Leaf & Bloomington Chocolate Co.
Melanie Kidd	Jack and Jessica Lai	Steve Lingle	Alan Marr	Darcy McGuire	Jason Miner	Hema Naphtali	Arlene D Olsen
Susan Kidder and Valorie Harris	Karen LaMalva	Leitha Lipford	Amy Marsalis Denni Stolze Martel	Greg McGuire	Mise En Place Design, LLC	Nationwide Life Insurance Company	Mr. and Mrs. Bond Oman
Mary Ann Kiger	Robert Lambert	Jeremy and Kourtney Lipscomb	Brianna Martin	Patricia McKale	Mission BBQ	Elizabeth and Michael Neal	Oman-Gibson Associates, LLC
Andy Killian	Maria and Bernard Landgraf	Michael Litterine		Duncan McKillop	Elizabeth Mitchell		

Jodi O'Meara and John Brockhoff	Marion Pearson	Nikki Presley	Brittany Rice	Kristie Rose	Cindy Schmittling	Gina Shurtz	Southern Illinois Healthcare
ONE Community presented by the Titans Foundation	Anastasia Peele	Paige Preston	Debra Richard	Jane Roseboro	Steph Schobernd	Deborah Sievers	Southern Illinois Leathernecks Detachment 1013
Kerry O'Neil	Pegasus Coin & Jewelry	Jordan Pribble-Seibert	Richards Plumbing & Electric	Lewis Roseman	Jennifer Schofield	SIHF Healthcare	
Keith O'Neill	Cindy and Charles Pegg	Michelle and Alysa Price	Dominic Richards	Linda Rosenberg	Olivia Schreiber	Brandy Sikora	Southern Illinois Reentry, NFP
Katie Onstine	Maria Penaloza	Ashley Prince	Erin and Gavin Richardson	Nicole Rosier	Hannah Schroeder	Silkworm, Inc.	
Tammy Onstine	Courtney Penrod	Austin Prince	Jami Richardson	Gina Rossetti	Jo Schulte	Martha Silva	SouthernTrust Bank
Tara O'Rourke	People's National Bank	Stephen Pritchard and Penny Gaither	Jason Richardson	Matt Rossi	Karla and Eric Schulte	Cameron and David Simmons	Karen Soutullo
Lorraine Osborne	Pepsi MidAmerica	David Proudfoot	Johnny Richardson	Ashley Rowald	Kathryn A Schulte	Jamie Simmons	Hilary Souza
Reinhard Otto	Jaime and Andrea Perez	Ashlee and Zachary Puckett	Melanie Richardson	Roy M. Speer Foundation	Mary Schulte	Laura and Robert Sims	Amanda Sowers
Benjamin Overby	Makaila Perez	Emmie and Stephen Rick	Emmie and Stephen Rick	Shauna Ruby	Jennifer Schulz	Neely Sims and Damon Ray	Lisa Spangler
Stacey Overturf	Sharon Perez	Aaron Puebla	PM Emmie Robinson Rick	Barbara Ruginski	Samantha Schunk	Sydney Sinks	James Sparks
Cristy Owen	Athena Perlmutter	Jonathan and Kate Puebla	Donor Advised Fund	Bridget Rund	Donald Schutt	Joe Sinnaeve	Janet Sparks
Minyon Owens	Carolyn Perrone	Lisa Pulley	Bridget Ridgway	Karen Runde	Schwab Charitable Fund	Blake Sircher	Kate Sparks
Frankie Oxedine	Persnickety by Jen Farley	Sandy Pulos	Maureen Riggs	Kristin Runde	Amanda Schwartz	Six Flags St. Louis	Leslie Sparks
Laurel and Eric Oyen	Kimberly and Daniel Peshkin	Phil Puzzanchera	Linda Riley	Michelle Runyon	Schwartzkopf Printing Inc.	Benjamin Sklar	Julie Spears
Arnita Ozgener	Chris Peterson	Dee Quaranta	Marci Rios	Dara and James Russell	Stacy Schweppe	Don Slate	Joelle Speed
Cindy Paauw	Nicholas and Cheri Petrillo	Sheree and Lauren Radakovich	Fred Ripley	Michelle and Jonathan Russell	Angela and Nick Sciarrone	Mr. and Mrs. Brian Smallwood	Lisa Spelta
Eva Pacin Ojen	Teresa Petty	Liz Raedeke	Rising Phoenix Initiative	Penny Russell	Scott County Community Foundation	Patti Hart Smallwood Fund	Stephen Spencer
Babette Paige	PGA Tour Superstore, UTC	Bonnie Raffield	River Radio	Magdalena Ruvira	April Scott	Sherry Smedshammer	Stuart and Shirley Speyer
Kristin Paine	Caren Phillippi	Sonia Ramos	Domiciano Rivera	Mandi Ryan	Kandace Scott	Bobbie Smith	Kayla Spikes
Heather Palmer	Angel Phillips	Sharon Randles	Lucy Rivera	Susan and John Ryzewic	Lori Scrivnor	Courtney Smith	Jacob Spooner
Panda Express	Martha Phillips	Michael and	Tommi Rivers	Collin Sabedra	Mr. and Mrs. James C. Seabury, III	Ellen Smith	John and Bonnie Sprague
Matthew Panek	Robert and Christine Phillips	John and Jeana Ray	Emerson Robbins	Mika Saepoff	Seabury Family Purposeful Giving Fund	Joshua Smith	Georgia Sroka
Panera Bread	Stacy Phillips	Nathan Raynor	Mark and Angela Robbins	Sage Mountain Advisors, LLC	David Searby Jr	Lauren Jo Smith	St. Louis Cardinals
Zoe Panizzi	Brandy Pickett	Joseph Rea and Valerie Garcia-Rea	Arianne Roberts	Meghan Sage	Marie, Jeth and Hannah Sears	Lou Smith	Souvenise St. Louis Elizabeth and James Stadler
Jeffrey Pansiera	Fred Pickney	Derek Reach	Caitlyn Roberts	Janis Saikaley	Stacy Seitz	Mary Smith	Leigh and George Stadler
William Pardy	Maryellen and Mark Pickrell	Jennifer Reali	Erica Roberts	Sam C. Mitchell & Associates	Tina Selinsky	Norman Smith	Cheryl Stakowski
Alejandra Paredes	Madison Pierce	William and Leigh Reames	Sarah and Victor Roberts	Zach Sample	Michelle Sellers and Alyssa Freniere	Rachel Smith	Jennifer and Jay Staley
Melissa Parker	Joel Pierre	Emily Rector	Robertson Community Health Foundation	Samtec Cares Lydia Vande Sande	Service Club of Manatee County	Sheryl Smith	Rebecca Stamps
Beverly Parks	Pinnacle Financial Partners, Inc.	Jennifer Redman	Taylor Robertson	Sarah Sanders	Teresa Setnar	Tia Smith	Brielle Stark
Parman Energy Group	Brittany Pinnon-Becker	Carolyn Redmond	Sheri Robins	Sarasota Dove Release	Aaliyah Seward	Tiffany and Joshua Smith	Olivia Stearns
Raheim Parris	Karen Piper	Reed & Heller, LLC	Amber Robinson	Samuel and Sarah Sarbacker	Janice Seybold	Keith Smithson	Samuel Stearns
Holly and William Parton	Pittsburgh Pirates & Bradenton Marauders	Krista Reed	Waverly and Janice Robinson	Krista Sarchet	Mary Ann Shafto	Robert Smithson	Melanie Stebbins and Jonathan Pyo
Magdalena Pascual	Michela Pizzinato	Tyson Reed	Angela Robison	Anna Sartes	Inga Shalmiyeva	Suzanne Smothers	Adam and Jacqueline Steele
Richard and Amy Pass	Naomi Plasterer	Regions Bank	Taylor Robison	Jana Saso	Todd Shay	Marion Smyser	Todd Steinbecker
Jennifer and Brina Passero	Karen and Travis Poling	Regmark Foundation, Inc.	Beverly Rodgers	Kate and Eric Satz	Beret Sheary	Snackworks, Inc.	Anne Stelmashenko
Kimberly Patikas	Nedda and Lawrence Pollack	Reid Health	Bibiana Rodriguez	Patricia Sauter	Shepherd Financial	Vicki and Jason Snider	Grace Stelmashenko
Rangel Patricio	Julie Pomeroy	Johnel Reid	Cesar Rodriguez	Cecile and H. Scanlan	Luke Sherrill	Cassie Snow	Ashley Stevens
Paul K. Overly Trust	Jocelyn and Kevin Popit	Kaitlyn Reid	Jose Rodriguez	Jason Scanlon	Shashidhar Sheshani	Lynn Snow	Britton Stevens
Liza Pavelich	Taylor Porter	Tabatha Reid	Tyler Roebke and Ashley Fisher	Staci Scarcello	Angela Shewmake	Cari Snyder	Amy Stevenson
Cynthia Payne	Kalli Portillo	Remmer/Ryzewic Family Fund	Kathleen and Bobby Rogers	Frederic and Lynn Scarola	Diana Shields	Loretta Snyder	
John Payne	Poshard Foundation for Abused Children Jo and Glenn Poshard	Stephen Repanshek	Christina Rogers-Hehr	Ann and Lee Schaefer	Paula and David Shigley	Danielle and Mark Sobolewski	Anne Stichter
Sierra Payne	Abbi Powell	Olga and Francis Reyes	Kathy and Robert Rolfe	Mark Scharnhorst	Jessica Shires-Herren	Leah Sohr	Carolyn Stiff
Paypal Charitable Giving Fund	PPI Technologies Group	Donna and Michael Reynolds	Julia Roper	Jennifer Schenk	Wendy Shuran	Troy Solarek	Stobbs, Sinclair & Associates, Ltd.
Peach Cobbler Factory	Jenni Presley	April and William Rhodes	Marisol Rosas	Cheryl Scherer		Julie Solomon	Haley Stocker
Stacey Pearce	Mathew Presley	Ramona and Stephen Rhodes	A John and Judith Rose	Jack and Lana Scherer		Andrea Sonnabend	Rebecca Stoll
		Sheila Rhodes	Jan Rose	C.J. Schlosser & Company, L.L.C.		Janet Sorenson	Giselle Stolper and Bob Collins



Todd and Esther Stoltzfus  
Chris Strahs  
Valerie Strenk  
Chelsea Stripe  
Bradley Strocko  
Studio 210  
Catherine Stutzner  
David Suares  
Andrea Suarez  
Suncoast Behavioral Health Center  
Becky Sundal  
Sunset Chevrolet-Buick-GMC  
SupportLinc  
Kiabe Supuwood-Allen  
Autumn Sutton  
PJ Svilokos  
Blythe Swartzentruber  
Stephanie Swearingin  
Rebecca Sweat  
James and Bev Sweeten  
Martha Swift  
Phil Swire  
Louie and Erin Szykowski  
Cindy and Brad Tabor  
Target  
Deborah and William Tate  
Ray Tate  
Barbara Taylor  
Christie Taylor  
David and Betsy Taylor  
Holly Taylor  
Margaret Taylor  
Donna Tegeler  
Michelle Templeton  
Tennessee Valley Authority  
Tequilas Mexican Restaurant  
Seth Thai  
Victoria Thai  
Colleen and Chad Thayer  
The Academy at Bradenton  
The Academy at Glengary  
The Ayers Foundation  
The Blackbaud Giving Fund  
The Brown Bag Bistro  
The Community Foundation of Greater Chattanooga, Inc.  
The Community Foundation of Middle Tennessee

The Community Foundation of Middle Tennessee - The David C. Guth, Jr. Fund for Centerstone  
The Cowles Charitable Trust  
The Daniel and Henry Co.  
The David and Mary Catherine McClellan Fund  
The Dorothy Cate and Thomas F. Frist Foundation  
The Enchiridion Foundation  
The Gary Sinise Foundation  
The Hagood Family Charitable Fund  
The Kouns Family Foundation  
The Louise Bullard Wallace Foundation  
The McMurry Foundation  
The Meadows Country Club  
The Memorial Foundation  
The Patterson Foundation Pay It Forward Fund  
The Print Shop at Pieces of Learning  
The Scheck Lewis McKown Group  
The Schooner Foundation  
The U.S. LBM Foundation  
Leonidas and Grace Theodoro  
Cynthia Thierry  
Amanda Thomas  
Barbara Thomas  
Cali Thomas  
Jennifer and Matt Thomason  
Edwina and Douglas Thomasson  
Joshua Thompson  
Crescent Thrush  
Fred Tiggas  
Dean and Victoria Tiggas  
Rachel Tilley  
Paul Timm  
Jayne Tingley  
Christopher Tittel  
TN Department of Corrections- Correctional Academy Cadets  
Tomeo, Tomeo & Rose Dental Implant & Oral Surgery Center  
Tony's Ranch House  
Whitney and Henry Topping  
Jorge Torres

Jeannette Traylor  
Naomi Treece  
Trinity Lutheran Church  
Brian Triola  
Michelle Trippi  
Denise Troche  
Sharon Troutt  
Lya Trujillo  
Candy Tryggestad  
Dr. Missy Trzeciak-Kerr  
Elijah Tucker  
Skyler and Jamie Tucker  
Tullahoma First Methodist Church  
Shannon and Ervin Tulloch  
Nikki Tumey  
Amy Turner  
Anne Tyree and Michael Weaver  
Roxanne Tyree  
D. Joann Ulrich  
Unitarian Universalist Fellowship of Clarksville  
United Services Automobile Association  
United Way of Greater Nashville  
United Way of Greater St. Louis Southwest Illinois Division  
United Way of South Central Indiana  
United Way of Whitewater Valley, Inc.  
Raghu and Dhruti Upender  
Upender Family Gifting Fund  
Elizabeth Urbanski  
Elisabeth Urwiler  
Maria Vail  
Scott Valentine  
Kate Valier  
Alec Valle  
April VanEpps  
Kelly Van  
Heidi Vandermolen  
John Vanhouten  
Katy Varney  
David Vasquez  
Maria Angelina Vazquez  
Kelly Veach  
Anita Verdeyen  
Dr. and Mrs. Bob Vero

VFW Post 4895  
Vigran Family Foundation  
Sarah Viliocco  
Blas Villalobos and Vanessa Gorski-Villalobos  
Brit Vincent  
Jessica and Dan Viner  
Scott and Cynthia Vito  
Elena Vizvary  
Kimberly and Dustin Vogler  
John and Mary Voigt  
Mary Glenn Vreeland  
Jenny Vukson  
VyStar Credit Union  
Davonna and Randall Wachtler  
Cristina Waddell  
Jill Wade  
Jennifer Waggoner  
Brett Wagner and Savanna Miller  
Michele Wagstaff  
Lorenzo and Tashia Waiters  
Katie Walden  
Rebecca Walden  
Walker Lumber & Supply  
David Walker  
Jeffrey Walker  
Stacy Walker  
Walker's Bluff, LLC  
Jack and Elizabeth Wallace  
Samantha Wallace  
Marisol Walle  
Walmart - Marion  
Benjamin Walmsley  
Becky Walter  
Russell and Pam Walters  
Gabe Wanck  
Zoe Ward  
Nevada and Kevin Wardlaw  
Kelly Warne  
Molly and Elliott Warren  
Christopher and Anne Was  
Watermark Auto Group Foundation  
Kelli Waters-Baker and Timothy Baker  
Vinita and Greg Watts  
Marguerite and David Watzek  
Wayne County Foundation

Lacey Weatherford  
Susan and Eugene Weathersby  
Christina Wedel  
Jen Weider  
Brittany Weiner  
Laura Weinland-Young and Richard Young  
Dawn Welch  
Dixie Welch  
Debbie Wennerstrom  
Vicki Wentzell  
Joni Werthan  
Stephanie West  
Adelaide Wetzel  
Laura Whalen Bonnie and Steve Wheeler  
Wheeler Family Account  
Chad White  
Charles Whitfield  
Heather and Chris Whitlock  
Jeannette and Clay Whitson  
Lisa Whittaker  
Richard Whitton  
Lyndsey Wideman  
Katherine Wiegand

Angela Wike  
Abigail Wilder  
Mary Wilder  
Bradley Wiles  
Nicole Wilkinson  
William G. and Marie Selby Foundation  
Brett Williams  
Bryce Williams  
Jerry Williams  
Josephine Williams  
Keri Williams  
Lisa and Paul Williams  
Macy Williams  
Mary Williams  
Rachel Williams  
Robert and Kay Williams  
Stephane Holgate Williams  
Tina Williams  
Tyka Williams Williamson County Mental Health (708) Board  
Willis Towers Watson  
Bobbie Willis  
Rebecca Willmon  
Stephanie Willson

Wilson - Wood Foundation Inc.  
Christine Wilson  
Holly Wilson  
Jakara Wilson  
James Wilson  
Kerry Wilson  
Lauren Wilson  
Mary and Paul Wilson  
Zaw Win  
Windmoor Healthcare of Clearwater  
Wings & Rings - Bedford  
Tammy Winner  
Laurence Winslow Mary Howard Winters  
Doris Wittenburg and Harian Lewis  
Tammy Wittman  
Maria Wolfe  
Amanda Wood  
Kris and Lindsay Wood  
Kristy Wood  
Darrell Woodard  
Woodman Collision Center  
Jessica and Lee Woosley

Houston Wooten  
Kevin Wright  
Melissa Wright  
Amy and Chad Wrightson  
Ian Wrigley and Nichole Bressner  
WUSF Public Media  
Cynthia and Daniel Wychor  
Jennifer Wynn  
Yarbrough Family Foundation  
Jon Yarbrough  
Neil Yoder  
Naoya Yokoyama  
Cynthia Young  
Lauren and Blake Young  
Nicole Young  
Rosalind Young  
Jose and Anneris Zaglul  
Kimberly Zang  
Heather Zayed  
Michelle Zervos  
Christine Zilleckis  
Carol and Malcolm Zwick

We greatly appreciate each gift given in support of patient care and our mission of delivering care that changes people's lives. We have made every effort to ensure the accuracy of our donor lists. Please notify Centerstone's Foundation office of any inaccuracies or omissions by contacting us at [foundation@centerstone.org](mailto:foundation@centerstone.org) or toll-free at 877-277-9820. Also, if you have any questions or would like to be added or removed from our mailing/contact list, please let us know. We stand ready to assist. Thank you for giving!

At Centerstone, we are committed to providing extraordinary care for our patients and their families. Every day, we strive to make a difference in the lives of those who entrust us with their care.

This work is made possible by generations of donors like you who allow us to continue to be an asset for people, families, and communities as a nationally recognized leader in behavioral healthcare.

To recognize the generosity of donors who make our vision a reality, the Foundation created Giving Societies to acknowledge and celebrate these amazing individuals for their generosity and continued support of our mission.



# The Sapphire Society

Centerstone's Sapphire Society honors the generosity and commitment of individuals who have chosen to create a legacy to Centerstone through their will, trust, retirement fund, life insurance or other planned gift. These distinguished contributors serve, like the beautiful sapphire, as precious and rare gifts for the future of behavioral healthcare and our communities. Sapphire Society members are listed below:

Bobby E. Bailey*	David C. Guth, Jr. and Carol Guth	Martha L. Middleton* (through The Heritage Fund)	Elizabeth Stadler
Michael and Barbara Barton	Philippa M. Guthrie and J. Alexander Tanford	Peggy Harris Nunley	Stephen T. and Barbara E. Taylor
David Borchering and Susan Pickens Aveniel and John* Cherry	Benjamin Franklin Hall	Richard K. and Noel Pinson	Kathryn D. Whittington and Michael A. Smith
C. Paul* and Bertha Chisena	Ella Bullard Hayes*	Lawrence and Nedda M. Pollack	Drs. Robert J. and Kay Williams
Martha Crutchfield	Cornelia Kelly	Steven Pritchard and Penny Gaither	Carol and Malcolm Zwick
Mary Dement*	Susan Kupisch	Jim and Sally Sheahan	<i>*Deceased</i>
JoAnne Duke*	Thomas W. Mahler, Jr., and Debra K. Mahler	Joan C. Sivley*	
John and Melissa Eason	Robert and Karen McGarvey	Beatrice Sneddon	
Richard H. Fitzgerald			

# The Reclaiming Lives Society

Centerstone's Reclaiming Lives Society recognizes donors who contribute at a leadership giving level, of \$500 or higher each year. These donors and their gifts make a tremendous impact regardless of the area the gift supports, providing a wonderful opportunity in the lives of children, youth, adults, and families seeking a path to wellness.

John Abbott	Backmeyer	Berschback	Lillian Bradford
Gregg Adams	Mirza Baig	Bradley Bills	Julie Brawner
Julie Adams	Stephen and Ann Bailey	Shay Binkley	Dr. Rhonda C.D. Bright
Kimberly Alderson	H. and Mary Barfield	Peter and Karen Bird	Rosemarie Brower
Julie and Sam Alfrey	Brenda and Jim Barker	Ann Birdwell Dobson and Matt Dobson	Martin and Cathy Brown
Lawson and Mary Allen	Bruce and Julie Barrick	Michael and Theresa Blackburn	Mark and Lauren Brueggen
Sallie and Jimmy Allen	Kim and KC Barrick	Melissa Blackburn	Alexander and Ann Buchanan
Frank Andrews	Kelley Beaman	Heidi Blair	Lisa and John Budslick
Teresa Armstrong	Lee and Julie Beaman	Miguel Blancarte, Jr.	Nancy and Jeffrey Bunting
Cynthia and David Arnholt	Carol Bean	Pamela Bollinger	Avery Burke
Heather and Scott Asbury	Lyle and Lisa Beasley	Angela Bostelman	Susan and Kent Burns
Gail and Raul Ayala	Luke Bennett	Brad Bowlin and Alicia Jayo	Keely Burns
Mrs. Janet Ayers	Bruce and Cathleen Berglund	Bonnie and Lee Brackett	Chuck Byrge
Courtney and James Bach	Jeanine Bernache		Kate Cain and Todd McKee
Leanne and Robert	Kathryn and Donald		Michal Caldwell

Maria and Billy Ray Caldwell	Lucy and Gregory Duvall	Kenneth Greenwood	Kerrie and John Johnson
John and Lisa Campbell	Lisa Eggebeen	Kristen and Charles Greer	Bonnie Johnson
Ann and John Campbell	Kipley Elliott	Jeffery Greer	Tom and Nancy Johnson
Valerie Cantrell	Maurice Elliott	R. Griffith	Katherine Johnson Cannata
Glenda Carbine	Michael and Amy Ellis	Meredith Griffith	Kiya Jones
Joseph Roberts and Christina Carter	David and Ella Elwood	Meggin Grobmyer	Kim Kaytor
Jeffrey Charlotte	Jennifer and Dave Embree	Linda Grove-Paul	Joshua Kegley
Jeanine Charlton and Greg Burke	Mike and Sara Enos	Thomas Grube and Rita Nolind	Brock and Corrine Kidd
Mrs. Aveniel Cherry	Pamela Essenburg	Carol and David Guth	Lindsey Kidd
Lee Clark	Kathleen and Alec Estes	Jill and Bradley Haas	Susan Kidder and Valorie Harris
Karen Clark	Andrew Falestiny	Vince Hafeli	Sarah King
Raja Clark	Reed Farley	Barbara and Paul Hagood	Susan and David Kinny
Terence Clay	Mark and Sue Faulkner	Elizabeth Hail	Edith and Miles Kirkland
Dianna and Shedrick Claycomb	Rhonda Felts	Claire and James Haltom	Kimberly Kirksey
Jason Coblentz	Anita and Charles Fields	Kevin and Christy Hamilton	Garry and Cheryl Kleer
Chase Cole	Terry and Sarah Fischer	Matthew Hardy	Timothy and Susan Knowles
Michelle Cole	Patricia Fischer	Sheila Harrell	Prasad and Amita Kodali
Ashley and William Collins	Michael Fisher	Conner Harris	Suzanne Koesel and Sandy Pate
Karen and David Conrad	Richard and Virginia Fitzgerald	Sherry and William Harrison	Richard Krause
Stephen and Shannon Cook	Peggy and Dick Fitzgerald	James and Dee Haslam	Philip and Diana Krebs
Carlos Cooper	Tory and Will Fitzgibbon	Anthony and Jessika Hatchell	Rona Krueger
Karen Copeland	Liz and Brennon Fitzpatrick	Julia Ann Hawkins	Gary and Glenda Krutsinger
Elizabeth and Richard Courtney	Joseph Flara	Halle Hayes	Robert Lambert
Rocco Couts	James and Emily Flautt	Carey Haynes	Laura and Tom Landstreet
Kelly Crockett	Kimberly Fleck	Mary Fran Hazinski and Ames Davis	Melissa Larkin-Skinner and Rodney Skinner
Dylan Crotty	Michael Fleming	Chase and Casey Headley	Casey Lawrence
Vera Crowl	Phyllis and Steve Fridrich	Khadijah Henry	Jodie and Hal Lawton
Hugh and Eliza Culverhouse	Rhonda Friend	Mr. and Mrs. Raymond Hensler	Laurie Lebo
Cary and Julie Curry	The Honorable Bill Frist and Mrs. Tracy Frist	Lisa and Craig Hentrich	Peter and Katherine Lee
Gary and Karen Cushman	Dr. Thomas Frist	Dr. Jason Hernandez	Beverly and Ken Leiser
Terrye and Mark Davidson	Julie and Thomas Frist	Amy Hoffner and Scott Gettle	Douglas and Laura Leonard
Edwin and Kim DeMoss	Happy Fulk	Meredith Hollomon	Corey and Meredith Lile
Pamela and Timothy Denison	Kerry Garner	Steven and Leslie Holman	Nina and Michael Lindley
Robert Dennis	Milton and Linda Genella	Robin Hopp	Tony London
Jennifer Hannon and Sam DeVane	April and Ryan George	Michael and Carol Horan	Jon Lopey
Dione DeWitte	Jacob and Morgane Giesecke	Rachel and David Hornsby	Nancy and Steve Low
John Dinkins	Sean and Cara Gingras	Sara and Fred Huggins	Patricia Lucas
Timothy and Jean Douglas	Cheryl and Chris Glattes	Venee Hummel	Jeff Lukowsky
Hannah and Nathan Dudney	Rev. James T. and Mrs. Mildred M. Golden	Culley and Jason Ingram	Thomas and Debra Mahler
Lorie and Gavin Duke	Lowell and Ellie Goldman	Lee Ann Ingram	Kristan Mallett
JoAnne Duke	Aaron and Anna Goletz	Orrin Ingram	Patricia and David Malone
Ronda and Randy Dunn	Anthony and Mary Belle Grande	Edward and Annie Jackson	Bruce and Paula Malone
Blair and Kelley Durham	Elena Graves	Molly and William Jackson	Amy Marsalis
	Edward and Jennifer Gray	Casey Jenkins	Debbie and William Massey



Hollie McClusky  
Arika and Xynethia McCormack  
Thomas McDow III and Jane McDow  
Patrick and Colleen McGinley  
Geoff McKim and Amy Cornell  
Coleen and Phil McMahon  
Ryan McMahon and Mindy Longjohn  
Coley and Collin McMillan  
Kimberly and Ferrill McRae  
Shane McSimov  
David and Elaine Melby  
Stephani and Willard Meyer  
Benjamin and Barbara Middleton  
Mandy Milek  
Sherry Miller  
Sally Mondino  
Margaret Moore  
Jonathan and Molly Morphett  
Mr. and Mrs. Russell Morrell  
Chris and Marie Mowbray  
Macy Mulligan  
Casey and Brady Mullis  
Paula Murphy  
Eden and Jon Murrie  
Stephanie Myers  
Nathan Nehrt  
Anne and Thomas Nesbitt  
Sally and Jonathan Nesbitt  
Scott and Heather Neu  
Ashley Newton  
Kevin Norton and Frank Mamone  
Jill and William Obremskey  
Kathleen O'Brian Christoff and Dennis Christoff  
Mr. and Mrs. Bond Oman  
Kerry O'Neil  
Keith O'Neill  
Stacey Overturf  
Laurel and Eric Oyen  
Barbara and Richard Payne

Cynthia Payne  
Cindy and Charles Pegg  
Steve Penley  
Robert and Christine Phillips  
Susan Pickens and David Borcharding  
Maryellen and Mark Pickrell  
Nedda and Lawrence Pollack  
Andrea and Greg Powell  
Stephen Pritchard and Penny Gaither  
Kaka Ray  
John and Jeana Ray  
Joseph Rea and Valerie Garcia-Rea  
Linda and Arthur Rebrovick  
Ben Reed  
Johnel Reid  
Lindsay Rhodes  
Ramona and Stephen Rhodes  
Erin and Gavin Richardson  
Fred Ripley  
Mark and Angela Robbins  
Waverly and Janice Robinson  
Tyler Roebke and Ashley Fisher  
Kathleen and Bobby Rogers  
Kathy and Robert Rolfe  
A John and Judith Rose  
Linda Rosenberg  
Aileen Rutherford  
Mandi Ryan  
Susan and John Ryzewic  
Larry and Jo-Anne Sacks  
Stephen Saliba  
John Sanders  
Geri Santoyo  
Kate and Eric Satz  
Cecile and H. Scanlan  
Frederic and Lynn Scarola  
Ann and Lee Schaefer  
John-Shoyev Schalk  
Jack and Lana Scherer  
Gemmi Schottenheimer  
Mr. and Mrs. James C. Seabury, III

Teresa Setnar  
Rick and Kim Seyer  
Cindy Shafer  
Rebecca Shah  
Alyssa Sharpe  
Melody Shipley  
Cameron and David Simmons  
Neely Sims and Damon Ray  
Laura and Robert Sims  
Elizabeth and Robert Singer  
Kristi Skeeters  
Mr. and Mrs. Brian Smallwood  
Clint Smith  
David Smith  
Joshua Smith  
Ashley Smith Dinkins  
Leah Sohr  
Julie Spears  
Jacob Spooner  
Elizabeth and James Stadler  
Tonya and Rob Stevens  
Benton and Charlene Stewart  
Rebecca Stoll  
Giselle Stolper and Bob Collins  
Samuel and Perian Strang  
Kathryn Streng  
Bradley Strocko  
James and Bev Sweeten  
Jacob Tate  
Colleen and Chad Thayer  
Leonidas and Grace Theodoro  
Phyllis Thompson  
Dean and Victoria Tiggas  
Fred Tiggas  
Jacqueline Trueblood  
Shannon and Ervin Tulloch  
Nikki Tumey  
Anne Tyree and Michael Weaver  
Raghu and Dhruti Upender  
Louis and Charita Upkins  
Lydia Vande Sande  
April Van Epps

Dr. and Mrs. Bob Vero  
Blas Villalobos and Vanessa Gorski-Villalobos  
Brit Vincent  
John and Mary Voigt  
Cristina Waddell  
Lorenzo and Tashia Waiters  
Jack and Elizabeth Wallace  
Christy Waller  
Christopher and Anne Was  
Vinita and Greg Watts  
Charles Webb  
Laura Weinland-Young and Richard Young  
Susan Welch  
Dixie Welch  
Doris and Dennis Wells  
Joni Werthan  
Bonnie and Steve Wheeler  
Lisa Wickes  
W. R. Wilder  
Robert and Kay Williams  
Collyn and Nick Williams  
Jennifer and Thomas Williams  
Kealie Williams  
Jerry Williams  
Lisa and Paul Williams  
David Wilson  
Adam Wilson  
Kerry Wilson  
Christine Wilson  
Mary and Paul Wilson  
Maria Wolfe  
Kristy Wood  
Troy Woolley and Katie Cameron  
Jessica and Lee Woosley  
Pamela and Thomas Wyllly  
Melanie and Darrin Yappen  
Jon Yarbrough  
Rosalind Young  
Amanda and Stephen Young  
Jose and Anneris Zaglul  
Carol and Malcolm Zwick

# Honorary Gifts

**In honor of 2025 Chairs of the Reclaiming Lives Luncheon**  
Lawson and Mary Allen

**In honor of Lisa Beasley**  
Lake and John Eakin  
Tricia and Doug McDowell

**In honor of Eileen Bennett**  
Patricia McKale

**In honor of Jodie Bielman**  
Susan Remmer Ryzewic

**In honor of Isabella and Sophia Binder**  
Russell Binder

**In honor of Ashley Smith Dinkins**  
Lake and John Eakin  
Tricia and Doug McDowell  
Charles Webb

**In honor of Centerstone Military Services**  
Equitable Analytics

**In honor of Kelly Crockett**  
David Wilson

**In honor of Mike Enos**  
Lydia Vande Sande

**In honor of Tracy Frist**  
The Dorothy Cate and Thomas F. Frist Foundation

**In honor of Centerstone's Executive Leadership**  
Carol and David Guth

**In honor of David Guth**  
Judy Horowitz

**In honor of Lorraine Guth**  
Wendy and Tim Johnson

**In honor of Sharon and Richard Maurer**  
Jack and Lana Scherer

**In honor of Dana Oman**  
Anita and Charles Fields  
Laura and Robert Sims

**In honor of Kate Satz**  
Jessica and Dan Viner

**In honor of Nikki Tumey**  
Kathy Dobbs

**In honor of Jerry Williams**  
Martha Silva

# Memorial Gifts

**In memory of Laura Baden**  
Elizabeth and Michael Neal

**In memory of George Carter Baird**  
John Curley

**In memory of Tristan Barth**  
Sherrill Farr  
Heather and Chris Whitlock

**In memory of Janice "Jan" Buck**  
Nancy Ezell  
Elizabeth Guice  
Debra Myrick  
Elizabeth Smith

**In memory of Phillip Bumpus**  
Lisa and Paul Williams

**In memory of Robert Duley**  
Thomas Duley

**In memory of Thomas Feminella**  
Daleen O'Dell

**In memory of Joy Jensen**  
Deborah and Larry Falk

**In memory of Lois Gordon Justice**  
Patricia Justice

**In memory of Beverly C. Little**  
Rita Cope-Messer  
Roger and Irmgard Hamner  
Jeff and Beth Henderson

**In memory of Sgt. Joshua B. Madden**  
Therese Goletz

**In memory of Jeffrey L. McClusky**  
Hollie McClusky

**In memory of Lt Colonel Eric M. Mott**  
Henry Evetts and Payton Kinler  
Beth and Kevin Evetts  
Sue Harpole  
Henry Evetts and Payton Kinler  
Karen LaMalva  
Steve Lingle  
Zack and Aimee McMillin  
Katherine Morgan  
Lauren Jo Smith

**In memory of Michael L. Miller**  
Linda Riley  
Nevada and Kevin Wardlaw

**In memory of Kara Nicole**  
Teresa Hencke

**In memory of Clifton Oldfield**  
Thomas Duley

**In memory of Glennis Perkinson**  
Chris and Marie Mowbray

**In memory of Major Raymond D. Roberts**  
Lawson and Mary Allen  
Barry and Jean Ann Banker  
Dana and Bond Oman

**In memory of David Schrader**  
Robert Lambert

**In memory of Phil Seybold**  
Lisa Barth  
Susan Golliher  
Cathy Jarvis  
Janice Seybold  
Ellen Smith

**In memory of Brittany Leann Waiters**  
Lorenzo and Tashia Waiters

**In memory of Larry Warden**  
Donna and George Alewelt



# Growing our Future

While all gifts to Centerstone contribute to our mission, endowments are meaningful as they provide a perpetual source of funding. As of June 30, 2025 Centerstone’s Endowment was comprised of the following named funds totaling \$14,630,298.69. We are deeply honored when an individual or family wishes to establish a permanent endowment in support of Centerstone.

## Restricted & Permanently Endowed Funds

### Restricted & Permanently Endowed Funds

The Ella P. Hayes Fund supports any program in the Tennessee service area

The Dede Wallace Fund supports any program in Tennessee in Davidson and contiguous counties

The Richard D. Sivley Fund supports any Tennessee children and youth program in Davidson and contiguous counties

The George Spain Research Fund supports the work of Centerstone’s Institute for Clinical Excellence & Innovation

The Richard D. and Joan C. Sivle Endowment Fund supports any Centerstone children and youth program

The Deborah Taylor Tate Endowment Fund supports any area of Centerstone; undesignated

The Richard H. Fitzgerald Endowment Fund supports any area of Centerstone; undesignated

The Duke Legacy Endowment Fund supports patient care in Southwest Florida

### Unrestricted Funds (Quasi-Endowments)

The Joseph E. Roche Endowment Fund

The Dr. Stephen J. Pritchard Endowment Fund

The Steven E. Bryant Endowment Fund

The Lisa Hooker Campbell Endowment Fund

The David J. Emmert Endowment Fund

The Lee Ann Summers Ingram Endowment Fund

The Josie Seybold Endowment Fund

The Philippa M. Guthrie Endowment Fund

The Linda Trader Endowment Fund

The Jack Wallace Endowment Fund

The Chris Julian Fralish Endowment Fund

The Michael J. McCalip Endowment Fund

The Jennifer Embree Endowment Fund

The Mark Faulkner Endowment Fund

The Sally Sheahan Endowment Fund

The Lieutenant General (Retired) Hubert G. Smith Endowment Fund

The Janet Ayers Endowment Fund

The Bonnie Brackett Endowment Fund

The R. Parker Griffith Endowment Fund

The Philip D. Krebs Endowment Fund

The Brad Smith Endowment Fund

The Barry S. Hale Endowment Fund

The Jennifer L. Bencie, MD, Endowment Fund

The Terrye Davidson Endowment Fund

The Thomas J. Johnson Endowment Fund

The David J. Melby Endowment Fund

The Lee Brackett Endowment Fund

The Mike Enos Endowment Fund

The Reverend James T. Golden Endowment Fund

The Steven C. Holman Endowment Fund

The Doug Leonard Endowment Fund

The Jonathan Morphett Endowment Fund

The Dana Oman Endowment Fund

The Carol Zwick Endowment Fund

The Kelly Crockett Endowment Fund

The Reed Farley Endowment Fund

The Geoff McKim Endowment Fund

The Reverend Bob Phillips Endowment Fund

The Colleen Thayer Endowment Fund

The Dr. Raghu Upender Endowment Fund

# Centerstone’s Endowment Funds Held at Community Foundations

<b>The David C. Guth, Jr. Fund for Centerstone</b> Held at the Community Foundation of Middle Tennessee	Supports the research and infrastructure necessary to bring new treatments to clients and provide universal access to those in the community who cannot afford behavioral health care
<b>Centerstone Military Services Designated Fund</b> Held at the Community Foundation of Middle Tennessee	Works to address the emotional and psychological aftermath of war for combat warriors and for the people who support them, supporting research, curriculum design and innovative delivery mechanisms to provide aid for those affected, in ways that work best for them
<b>Centerstone Behavioral Health Endowment Fund</b> Held at Decatur County Foundation (Indiana)	Supports services provided by Centerstone in Decatur County, Indiana
<b>The Centerstone Mental Health Fund</b> Held at Heritage Fund–The Community Foundation of Bartholomew County (Indiana)	Supports services provided by Centerstone in Bartholomew County, Indiana
<b>Centerstone Mental Health Fund for Jefferson County</b> Held at Community Foundation of Madison and Jefferson County (Indiana)	Supports services provided by Centerstone in Jefferson County, Indiana
<b>Camilla B. Dunn Endowment Fund to Benefit Centerstone</b> Held at Wayne County Foundation (Indiana)	Supports services provided by Centerstone in Wayne County, Indiana
<b>Centerstone, Inc. Endowment</b> Held at Jennings County Community Foundation (Indiana)	Supports developmentally and emotionally disabled clients of Centerstone in Jennings County, Indiana
<b>Centerstone Fund</b> Held at Manatee Community Foundation (Florida)	Supports services provided by Centerstone in Florida

# Centerstone’s Endowment Funds Held at Community Foundations

<b>The Martha L. Middleton Mental Health Fund</b> Held at the Heritage Fund–The Community Foundation of Bartholomew County	Benefits services provided by Centerstone in Bartholomew County, Indiana
---	--

Join us in this mission – make an impact today through your gift.

As a nonprofit organization, gifts are vital to our mission and to the patients we serve. Your charitable gifts ensure critical access to care.

In this report, we celebrate you – our donors and funders – and the impact that your generosity is making in people’s lives and our communities. Thank you for your gifts to Centerstone!

To learn more or to support our mission, please visit [centerstone.org](https://centerstone.org).



---

# CENTERSTONE

[centerstone.org](https://centerstone.org)

Centerstone is the largest nonprofit behavioral health organization in the United States. With more than 10,000 team members working at 350 locations in communities across the country, Centerstone provides healing and hope to people of all ages through mental health services, addiction care and social supports. Centerstone is a leader in operations for the 988 Suicide & Crisis Lifeline. Centerstone's Military Services offers specialized care nationwide for veterans and the military community. Centerstone's Institute provides guidance through research and technology, leveraging the best evidence-based practices for use across its communities. Centerstone's Foundation secures philanthropic resources to support the work and mission of delivering care that changes lives.